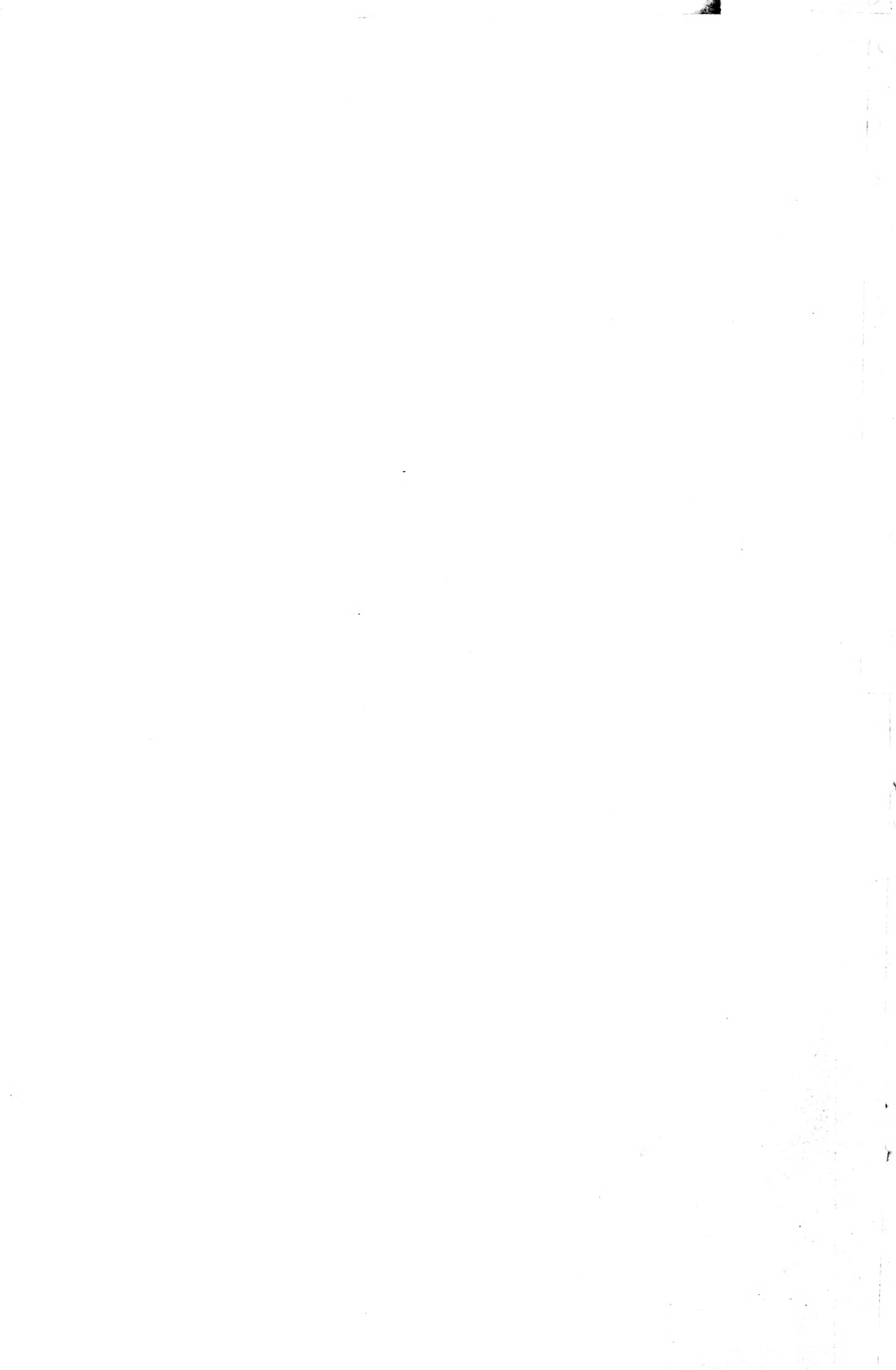


Historic, Archive Document

Do not assume content reflects current scientific knowledge, policies, or practices.



6273

ROHRER'S

FARM AND GARDEN SEED

1932

P. L. ROHRER & BRO.

SMOKETOWN

LANCASTER COUNTY, PA.

Vegetable Seed Trials



Cut 20 Per Cent Off the Cost of Seeds

Take This Special Offer

Special on 5c. Packets of Seeds

Any 6 packets for	\$0.25
Any 12 packets for50
Any 24 packets for	1.00

Special on 10c. Packets of Seeds

Any 3 packets for	\$0.25
Any 6 packets for50
Any 12 packets for	1.00

This Special Offer applies to any packet seeds listed in the catalog but does not include seeds priced at 10c. per ounce.

Lower prices and exceptional values will be especially welcome to every buyer of seeds this year. We have co-operated by offering many unusual specials. Look for them on the different pages. Every offer means a real saving.

Every Seed You Buy Must Satisfy You—Or Your Money Back

Any seed purchased from us must be of the quality it is represented to be. If not, you may return them—at our expense. Your money will be immediately refunded.

BAGS

Unlike most firms the bags we furnish are free and not weighed in with the seeds. This practice saves you real money.

FREIGHT PREPAID

On all orders of 300 pounds, or more (except Seed Potatoes and Onion Sets), shipped at any one time to any freight station in Pennsylvania, New York, Massachusetts, Connecticut, Rhode Island, Delaware, Virginia, West Virginia, Maryland, New Jersey and Ohio. All prices on Garden Seeds are postpaid. We do not pay express charges.

EXPRESS SHIPMENTS

Amounting to 300 pounds, or more (except Seed Potatoes and Onion Sets), are shipped "Charges Collect". Check will be mailed allowing you the actual freight charges we would have paid if shipped by freight.

PARCEL POST

When you want Field Seeds shipped by Parcel Post, please add extra for postage, as the catalog prices on Field Seeds do not include postage.

PRICES

Latest price list of Farm Seeds is mailed with each catalog. If you are not ready to place your order when the catalog reaches you, write for the latest price list before ordering.

ORDER EARLY

It is important to order as soon after you get the catalog as convenient, then you will have your seeds on hand for planting when you want them.

TERMS OF PAYMENT

All orders must be accompanied by cash. OUR GUARANTEE PROTECTS YOU. Registered Letters, Money Orders, Checks or Drafts preferred. Postage stamps often reach us in a worthless condition and are not desirable.

NON-WARRANTY

Every care is exercised to give all customers seed of good quality that will prove profitable and satisfactory yet the following clause is to be made plain. P. L. ROHRER & BRO. cannot possibly give any warranty, express or implied, as to description, quality, productiveness or any other matter of any seeds it sells and cannot be responsible for the crop.

P. L. ROHRER & BRO., Smoketown, Lancaster Co., Pa.

CLOVER, GRASS AND FIELD SEEDS



Field of Domestic Broad Clover

CLOVER SEED

Of all the crops grown on the farm Clover is the most important, not because of its market value and importance as a forage crop, but its great value as a fertilizer. Farmers should use this valuable seed freely as there are many profits derived from it. As a forage plant one of the different varieties is adapted to every section of the country, and everything considered there can be no doubt that the Clovers are the most valuable of all forage crops.

By using good seed the grower will derive a real benefit, first from the hay crop, and greatest of all, the upbuilding and maintenance of his land.

The sowing of Clover is absolutely essential to proper rotation of crops and to keep up the fertility of the land. The progressive farmer will sow Clover seed liberally in order to keep up the productiveness for other crops. A good crop of Clover will restore fertility to land and put more humus into the land than most any other crop.

We sell only the very highest grades obtainable; highest in purity and germination. Why not grow a few more loads of hay from the same acreage. Sowing our GUARANTEED SEEDS will help you do it. We specialize in Clovers, and feel safe no one can offer better values, either as regards to quality or price. The most careful attention is given our Clover Seed, as it constitutes a large percentage of our entire Seed Business.

SOIL. Clover makes its best growth on rich, fertile, well drained limestone soil, but if the seed is inoculated will flourish on most any soil where there is sufficient rainfall. Clover will grow and flourish in a soil that is low in nitrogen as long as there is a sufficient supply of bacteria to start the plants until they have an opportunity to develop tubercles on the roots for the purpose of gathering nitrogen from the air and storing it in the soil.

DOMESTIC BRAND MEDIUM RED CLOVER

"Medium Red Clover" also known as "June Clover" is by far the most important Clover in our country. Medium Clover is second to none as a soil strengthening crop, adding fertility to the soil, making it possible to grow larger and better crops of corn and other grains. It grows about two feet high yielding two to four tons of hay per acre. This is also valuable for pasturing. The long roots penetrate deeply into the soil gathering nitrogen from the air and storing it in the soil in the form of nodules on the roots, thereby providing rich foods for crops, cereals, etc., which follow it. Quality of seed is very important. When sowing Clover seed be careful to sow nothing but pure, clean seed, which are plump and will germinate readily and produce hardy vigorous plants. Poor seed is the poorest kind of economy. Many farms and crops

have been almost ruined by sowing low grade seeds containing noxious weeds. If you do not want weeds don't sow them. Use our DOMESTIC BRAND CLOVER and you need not worry about polluting your farm with noxious weeds. Don't fail to get our samples and prices before placing your order, as you will find nothing better than our DOMESTIC BRAND CLOVER. If sown alone use six to eight quarts per acre. Where Timothy has been seeded sow four quarts per acre. See price list.

WHAT IS "DOMESTIC BRAND?"

When we quote "Domestic Brand Clover" it means the highest quality that money can buy, no weeds, no chaff, just pure seeds that have been thoroughly cleaned and carefully tested.

Don't fail to take advantage of the Special Offer of Bush Beans, Peas and Sweet Corn.

GENUINE MAMMOTH RED CLOVER

MAMMOTH CLOVER, also known as "Pea Vine" and "Sapling," is very much like the Medium. It matures about two weeks later than Medium, and develops a stronger root and top development. It produces less pasture after the crop is cut than Medium, but for restoring land or for general fertilization there is nothing more valuable than Mammoth Clover. It yields a large growth and when turned under will loosen and improve the working of heavy clay soils better than any other crop. There is no difference in the appearance of the seed. We, therefore, handle only such lots as can be obtained from the most reliable sources, direct from sections growing Mammoth almost exclusively. We take the same care in selecting this seed that we do in securing our best grades of other Clovers. We only sell one grade, DOMESTIC BRAND MAMMOTH. Sow about the same rate per acre as the Medium. See price list. Use Stimugerm to insure Bumper Crop.



Mammoth Clover

CHOICE MEDIUM RED CLOVER

Choice Medium Clover is found superior to the seed sold by the average dealer. It is in every way equal to the so-called "Best Grades" on the market. This seed will surpass Prime in purity and growth.

Our Choice Medium Clover is Government Verified Ohio and Indiana Grown seed. Tests Better than 99% Pure. Free from noxious weeds. If you are looking for seed at a lower price and yet safe to sow you will find our Choice Clover will fill the bill. There are many best grades sold that will not equal our choice clover in purity and germination. See price list.

WHITE CLOVER

White or Dutch Clover is a perennial of a creeping nature, and is used mostly in Lawn Mixtures, although it is a valuable addition to Pasture Mixtures, using one to three pounds per acre. Adapted to low meadows where not too wet. On low lands suited to its growth it will last indefinitely, although it may be crowded out by other grasses certain seasons only to reappear the next. Invaluable in Lawn Mixture, imparting a rich green to the lawn, and holding its color with the grasses till after freezing. See price list.

CRIMSON CLOVER

Crimson Clover is especially valuable as a cover crop and for green manure. In feeding value it is even higher in protein than Red Clover, and makes one of the best Clovers for silage purposes. It is a wonderful producer and is especially relished by all live stock. Crimson Clover has been used extensively as a fertilizer crop, sowing it in the last working of the corn, used as a cover crop during the winter and plowed under in the Spring will grow greatly increased crops.

**INOCULATE THIS
SEED WITH
STIMUGERM**

WHEN TO SOW. Crimson Clover can be sown to advantage any time from beginning of July to October. Land should be well prepared before sowing seed, and not covered too deep. It is one of the cheapest legumes for soil improvement, and will thrive on poor lands and will add fertility. It will pay you to use this seed liberally. Sow 15 pounds of seed per acre. We handle only one grade, highest in purity and germination. It will pay you to inoculate Crimson Clover with Stimugerm. See price list.

ALSIKE CLOVER



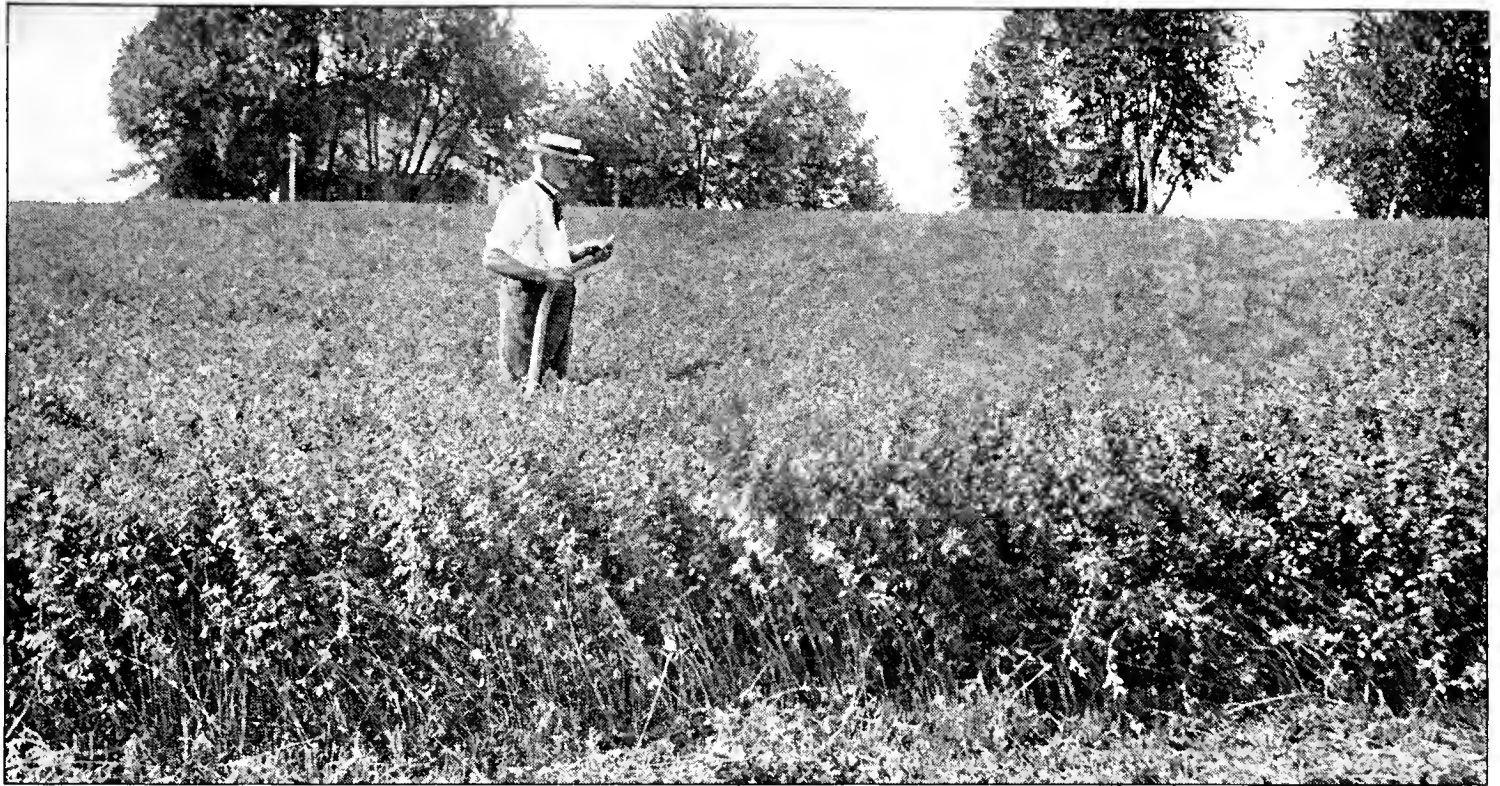
Alsike Clover

Alsike Clover is increasing in popularity very rapidly. It makes the best combination with Red Clover and Timothy, either for hay or pasture, and grows well on high as well as on low wet soils. It is specially adapted to wet soils and also on soils that are too low in humus to grow Clover. When sown with other grasses it forms a thick bottom and greatly increases the yield, and the quality of the hay is better. When well cured there is no hay more greatly relished by stock of all kinds. Mixed with Clover and Timothy it affords one of the best forage rations, and the three are grown successfully together, the hay from such a mixture being better than either of them alone. The seed is smaller than the red Clover, therefore does not require as much seed per acre. Alsike is hardier than Medium or Mammoth Clover, but lodges more than either, and for this reason it is better to sow it with Clover and Timothy. If sown alone sow eight to ten pounds per acre. Alsike is a perennial, and because of this characteristic is especially valuable for growing on land where one wishes to secure a permanent pasture or meadow. See price list.

**INOCULATE THIS
SEED WITH
STIMUGERM**

Flowers can be raised so easily with Rohrer's Seeds and so inexpensively if you take advantage of our special offer on the inside front cover.

NORTHWEST ALFALFA



Northwest Alfalfa

Alfalfa should be grown on every farm, and now holds an important place in agriculture, especially in sections where dairying is carried on. Adaptable to every State in the Union. Most failures are traceable to low grade or Southern seed. One thing is absolutely essential—begin right. Be sure you use only Northern Grown Seed that will stand the winters.

After Alfalfa is once established it lasts for several years, yielding three to four cuttings every season of the most excellent and nutritious hay, which is readily salable at top prices. We highly recommend Northern Grown Seed, having found it more dependable than Western or Southern Grown Seed. It would hardly be possible to say too much about Alfalfa; it is a working plant which is changing the destiny of many farming sections.

FACTS ABOUT ALFALFA

There is no state in the Union in which Alfalfa cannot be successfully grown. Alfalfa produces from 3 to 7 tons of hay per acre. It has as much Protein as wheat bran. Three hundred and sixty stalks have been grown from one seed. It does not exhaust the soil, but enriches it. Grows from three to five crops per year.

Alfalfa in money value is worth 45% more than other Clovers, and 60% more than Timothy. One acre will pasture 20 pigs for six months. Three pounds per day makes a full feed for fattening lambs. Four to five pounds makes a full feed for fattening aged sheep.

SELECTION OF SEED VERY IMPORTANT

It is very important to use Alfalfa that is of a hardy strain. There is no better proof that a strain is hardy than that it is grown in the Northwest, where the winters are severe and the ground freezes eight feet or more. Alfalfa raised under these conditions must be of the hardest strains, and will stand the most trying conditions. We have

**INOCULATE THIS
SEED WITH
STIMUGERM**

Alfalfa is the farmers' government bond. He clips off the green coupons three or four times, and leaves the original bond intact, indestructible, prolific, the prosperity of any community. It is the symbol of high social and intellectual culture. In communities interspersed with green fields of alfalfa, we find pure-bred stock and well fenced farms with comfortable and beautiful farm buildings.

Alfalfa is the farmers' deep tillage machine that penetrates deeply into the subsoil, admitting air and water, and bringing to the surface stores of plant food from below, that would otherwise remain out of reach of the plow and cultivator.

Alfalfa should be grown on every farm. It surpasses all other crops in yield, in feeding value, as a drought resister and as a builder of the soil. It enhances the value of every farm.

again secured a very choice lot of Genuine Northern Grown Alfalfa, fully matured, as pure as is possible to grow. High in germination, full of seed life, plump and attractive. You can sow no seed that will give better results than our Northern Grown Seed. See price list.

GRIMM ALFALFA

Grimm Alfalfa has gained a wide reputation on account of its productiveness, and extra hardiness, for it survived winters that killed out many fields of other varieties of Alfalfa. Grimm Alfalfa was selected from the hardest plants year after year until it became a fixed type of extreme hardiness and vigor. It differs somewhat from the other varieties in the crown of the plant, being receding, and is therefore protected by the surface of the soil. The roots are also fibrous instead of having only long tap root. See price list.

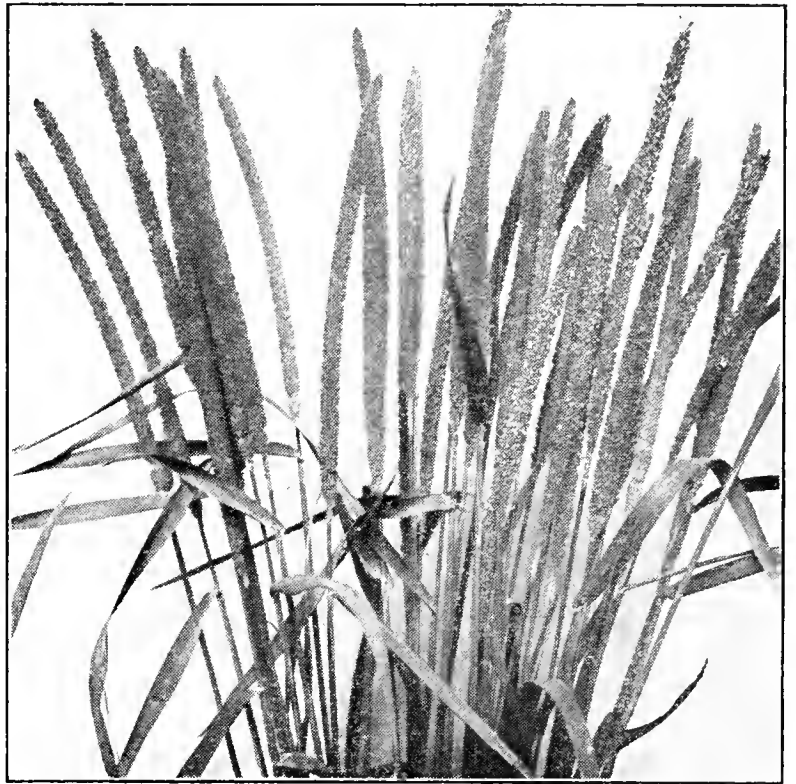
SPECIAL OFFER

**Michigan Grown Grimm Alfalfa. Growers Affidavit.
U. S. Verified. 99.50% pure. \$13.60 per bushel as long as
our present supply lasts. DON'T WAIT.**

*Samples to prove the finer quality of Rohrer's Farm Seeds are sent FREE on request.
You'll see the difference.*

ROHRER'S FANCY TIMOTHY

Timothy is the most valuable of all grasses. Our Fancy Timothy is guaranteed to be high in purity and germination. We know you will be pleased with this seed. A good stand is easily secured. It is used more extensively than any other of the Grasses or Clovers. Grows rapidly and produces hay that commands the highest market price. Timothy seed is sown with Clover and Alsike and makes very good hay. It is also valuable in pasture mixtures. Timothy Seed is low in price compared with other Clovers, therefore, extreme care should be taken to sow best seed obtainable; highest in purity and germination. When sown alone sow eight quarts per acre. If sown with Clovers sow three to four quarts per acre. See price list.



Rohrer's Fancy Timothy

TIMOTHY AND ALSIKE

This seed is grown and harvested together and is sold for less than you can buy the seed separate. Our seed is *re-cleaned* and runs 20 per cent Alsike. These two crops are well suited for growing together and will thrive on any land located anywhere within the clover belt, for although this crop reaches its highest state of perfection on moist low land it can be grown anywhere with good results and makes good hay. About 12 to 16 lbs. per acre is required. A trial of this mixture will add to your profits. See price list.



Sweet Clover

SWEET CLOVER

Sweet Clover resembles Alfalfa, both in appearance and habit of growth, when young. Grows larger than Alfalfa. When properly handled Sweet Clover is a valuable addition to the farm crops in many sections. It is efficient as a soil renovator, by reason of the large amount of nitrogen it will be able to take from the air, as well as the humus added to the soil when turned under, for the decay of the roots when it is harvested. No other forage or soiling crop has ever come into such favor as White Blossom Sweet Clover. It is, however, not strange that this is true, for no other plant possesses so many merits. If it had no other property than its ability to inoculate soil for Alfalfa it would be a worthwhile investment, but in addition to this it is one of the best forage plants, possessing all the feeding qualities of Alfalfa. It will establish itself in a greater variety of soils than any other legume. As a fertilizer it equals or even surpasses Red Clover, and especially is this true where soil is lacking in humus, as the large fleshy roots of Sweet Clover furnish a great amount of this essential element in addition to the nitrogen supply by Red Clover. As a soil builder either for naturally poor soils or those that have been exhausted, no other plant can take its place. It is also one of the best crops for Bees from which to gather honey, and many prefer it to White Clover. Seed is much lower than Red Clover. Analysis and feeding experiments indicate that it is nearly equal to Alfalfa in feeding value. There is nothing better to bring your worn out land into farmable condition. To get full value out of your Sweet Clover inoculate with STIMUGERM. See price list.

**INOCULATE THIS
SEED WITH
STIMUGERM**

Greatest care is taken in the selection and examination of Rohrer's Farm Seeds. Clean, hardy seed—the Rohrer kind—will bring finer crops.



A Field of our Special Hay Mixture

SPECIAL HAY AND PASTURE MIXTURE

For ordinary Spring seeding this mixture cannot be beaten. The proportion is approximately six pounds Red Clover, three pounds Timothy, two pounds Alsike and one pound Alfalfa. Sow 12 to 15 pounds per acre on well prepared seed bed. Having it so mixed saves extra bags, extra weighing, and extra profits, sampling, etc., and positively cheaper to you than if you bought each separately. None but the best seeds are used in this mixture, and it is suited to nearly all soils, and will grow in

every section. This mixture should be used very extensively for either hay, pasture or soiling purposes. When seeding Timothy in the Spring always use Red and Alsike for best results. This mixture, we believe, will meet with your approval and be a money saver. It reduces the cost of your seeding and is an excellent grass combination for hay. We mix this seed, and positively none but best grades are used. This insures you a mixture that is free of noxious weeds. See price list.

KENTUCKY BLUE GRASS

Kentucky Blue Grass may be sown Spring or Fall. One of the best grasses for pasture mixtures, has many advantages for general purposes and is extremely hardy and stands severest droughts. Comes on early in Spring and grows late in Fall. We recommend it as the grass every stock raiser wants. Fine for pasture as it forms a tough, closely knit sod that is not injured, but benefited, by trampling of grazing animals. It requires a good soil containing some lime to yield profitable crops. When sown alone, sow 35 to 40 pounds per acre. See price list.

ORCHARD GRASS

Orchard Grass makes a desirable grass on account of its quick growth, and valuable aftermath. It starts growing earlier in the Spring and stands dry weather better than any other grass. We would recommend it mostly for pasture, and more especially when sown alone. If you have never grown Orchard Grass, try a little this year. It will last for years without the necessity of resowing. May be sown either Spring or Fall on any kind of soil. About two bushels per acre is required. See price list.

PERMANENT PASTURE MIXTURE

Good pasture is the foundation of the riches of a farm. One of the most valuable crops of successful stock and dairy farming is abundant pasture. Our mixture yields a very heavy crop of the finest and most succulent grasses early in the season until late in the fall, and is intended especially for seeding pasture grounds. Several varieties are used in this mixture, a combination of grasses of different habits and seasons of growth and can be depended upon to produce a turf that will stand the trampling of stock, and as the different grasses have different habits of growth they grow close together, their roots inter-

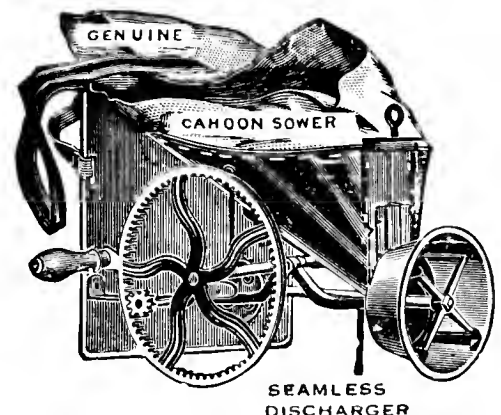
lacing, covering the soil and forming a protection from the extreme heat, cold and dry weather. This enables the grasses to retain a rich green appearance from early Spring to late Fall. These mixtures are recommended for either Spring or Fall sowing. If sown in the Spring sow with a nurse crop. About one bushel of Oats or Barley per acre is very desirable.

Two mixtures are made: One for well-drained up-land, called Highland Mixture, and the other for lowland meadows, which is called Lowland Mixture. Sow 25 to 30 pounds per acre. See price list.

CAHOON SEED SOWER

Buy the Famous Cahoon Seed Sower by Parcel Post.

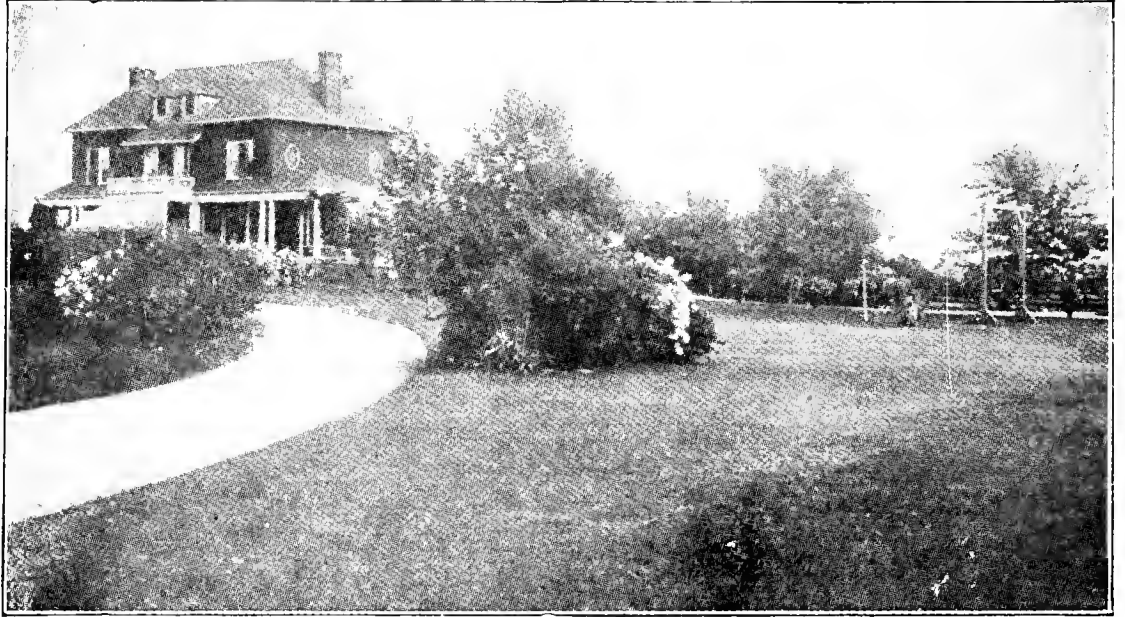
The Cahoon is scientifically constructed to scatter the seed evenly in front of the operator. This sower has been in use all over the world, and has been proven to be the simplest, most accurate, and durable sower made. It is made entirely of all steel, iron, brass, and heavy canvas, and sows grain or grass seeds. Needed on every farm. Even seeding brings good reaping. Order today. Satisfaction guaranteed. \$4.50 postpaid to you.



Mrs. Charles S. Flickinger, of Duncannon, Penna., writes us that she is especially well pleased with our Seed Potatoes. Have you ordered some?

LAWN GRASS

Our Fancy Lawn Mixture is composed of the very best grades of seed. This seed makes a quick growth and covers the ground in a few weeks after sowing the seed, forming a rich green turf. Can be sown either Spring or Fall. For best results Spring sowing is most favorable. One pound seed will sow 200 square feet of ground. Seed should be raked in slightly, and after seeding soil should be pressed down firmly. Seed should be covered one-fourth to one-half inch. See price list.



Result of our Fancy Lawn Grass Mixture

RED TOP

This is a valuable grass for either hay or pasture. It ranks second to Timothy in production of hay and makes excellent pasture and good crops of fine hay. It is valuable for seeding alone or to seed along with Timothy, Clover and other grasses. Can be sown in Spring or Fall. It succeeds better and is adapted to a

wider range of soils than any other grasses. It is hardy and will make a heavy sod, and it should be a large constituent part of all mixtures intended for permanent pasture. If sown alone use 10 to 12 pounds of hulled or solid seed. We handle the solid seed and do not recommend sowing the unhulled seed. See price list.

SWEDISH SELECT SEED OATS



Swedish Select Oats

Considered by many to be the most valuable Oats raised in the Northwest today. An extremely productive variety with tall, stiff straw, bearing long heads filled with good weight grains. It possesses striking features, the grain is short, plump, white and heavy, under favorable conditions averaging 40 to 42 pounds per measured bushel. Owing to the great root development it stands very high and is noted for its drought resisting qualities. Those who prefer a white Oats for spring seeding will make no mistake in sowing Swedish Select. Our seed was grown in the Northwest. Our experience has proven to us that all kinds of seeds grown in the Northwest are hardier, more vigorous and more productive than Southern or Western Seed. This is particularly true of Seed Oats. Try our Northern Grown seed this year and grow a Bumper Crop. See price list.

BARLEY

BEARDED BARLEY. Barley should be grown more than it is. It will do well in most any section of any state. It is also one of the best grains for a nurse crop for Alfalfa when started in the spring. Barley culture is similar to that of Spring Wheat or Oats. To produce large crops of Barley the soil should be well prepared to receive the seed. It is heavier than Oats and will yield more bushels per acre. It is a splendid feed. Barley should be sown as early as Oats, if possible, but will stand late planting better than Oats. Sow about two bushels per acre. See price list.

MAINE-GROWN SEED POTATOES

Plant Guaranteed Stocks—It Will Increase Your Profits
FOR PRICES ON SEED POTATOES, SEE PRICE LIST. FREIGHT PAID OFFER
DOES NOT APPLY ON SEED POTATOES

Our stocks of Maine-Grown Seed Potatoes were grown especially for seed by most reliable seed growers in Aroostock County, Maine, and shipped to us in carload lots. All seed carefully selected, and will produce much larger yields, and Potatoes of a finer quality than the home-grown stocks usually sold on the open market for seed. All seed guaranteed to please purchaser and sold on the Money-Back plan. If not satisfactory Potatoes may be returned and money will be refunded.



Irish Cobblers. Grown by I. D. Rohrer, Lancaster County
From Rohrer's Certified Seed



Treat Seed Potatoes with Semesan Bel. One Pound of the New Improved Semesan Bel will treat 60 to 70 Bushels. A convenient and effective method of treating Seed Potatoes. Simply to mix, dip and drain, dry your seed and they are ready for planting. See page 29. Descriptive booklet sent free on request.

EARLY SURPRISE. This variety is without doubt the earliest white potato in existence. It is round to oval in shape, flesh is white and firm, and far more productive than most early potatoes. If you want first early potatoes you will not go wrong in planting this variety.

IRISH COBBLER. An early white-skinned variety, very short, thick and inclined to be shaped round. This variety is yearly increasing in popularity for early markets. The crop is ready about 10 days earlier than Early Rose. The vines are very stocky, vigorous, and not as liable to be affected with blight or suffer drought as most other varieties. Owing to the fact that the Cobbler withstood the severe drought last season better than other varieties, it is probable that there will be a larger demand than usual this season. We advise ordering early.

EARLY ROSE. The stock we offer is the genuine Old Standard Early Rose, pure and true-to-name. While this is one of the oldest varieties it still retains its popularity. You will not go wrong in planting a quantity of this sort.

RUSSETS. One of the best for main crop cultivation. Similar to the Raleigh in shape of tuber but has a russet skin and few eyes. This is a very hardy sort and usually produces good yields even when seasons are unfavorable. Vines grow vigorous, have fine blight resisting qualities and usually remain green until late in fall. This variety outyielded other varieties two to one in many sections last season, planted side by side. The stock we offer this season are Certified Northern Michigan-grown Seed. Grown from Tuber-Unit Stock.

EARLY OHIO. A sort that is well known to market gardeners. The tubers are round with pink skin and excellent quality. Grows quickly, cooks mealy and keeps well for an extremely early variety. Our stocks are true-to-name and will please you.

VERMONT GOLD COIN. This is a very popular main crop sort. We have found it to be a very desirable and profitable potato to grow. Vines are very heavy in growth and seldom known to blight. Tubers are large, white and lie close together in the hill. The flesh is fine grained and excellent for table use, retaining its fine eating qualities until late in spring. You will be highly repaid if you give this variety a trial.

IMPROVED GREEN MOUNTAINS. This variety has proved to be the surest cropper, a most profitable sort to grow. The skin is pure white, slightly netted. The quality is one of the best. Keeps excellently and its fine table qualities make it one of the foremost sorts in the large City markets. Shippers prefer this variety and frequently pay a premium. Best for loose and muck soils, and especially adapted for Northern states. Plant this variety and increase your profits.

SMOOTH RURALS. Also known as Rural New Yorker No. 2, Sir Walter Raleigh, Carmen No. 3, and White Rurals. A Main Crop Variety that is here to stay. It is a Great Yelder, large in size and very smooth. It is one of the best keepers and usually brings top prices. In shape it is slightly oblong. The skin and flesh are white. One of our customers reports a yield of 260 bushels from ten bushels of seed. See price list.

Pyrox

REG. U. S. PAT. OFF.
TRADE MARK REGISTERED

SPRAY YOUR POTATOES WITH PYROX

Kills bugs and checks blight. Mixes easily—sticks like paint—will not clog. Get bigger yields.

Good Potatoes come from strong stout healthy vines, enabled to benefit fully from soil, air, rain and sunshine. They produce to the limit when sprayed with **PYROX** which kills insects, stops fungus troubles, and stimulates foliage on all kinds of crops. All ready to mix with water and spray.

PRICES			
1 lb.....	\$0.50	10 lb.....\$2.90	100 lb...\$14.50
5 lb.....	1.70	25 lb..... 6.00	300 lb... 40.50

Grow your own Protein. Many have found it exceptionally profitable to raise Soy Beans to put in the silo with corn.

SEED CORN

Possibly no other county in the world is better adapted to the growing of Seed Corn. The deep fertile soil and the favorable climate of Lancaster County produce strong vigorous seed that has no superior. Anyone buying Seed Corn from us can test it on arrival and if not found satisfactory it can be returned at our expense and your purchase money will be promptly refunded.

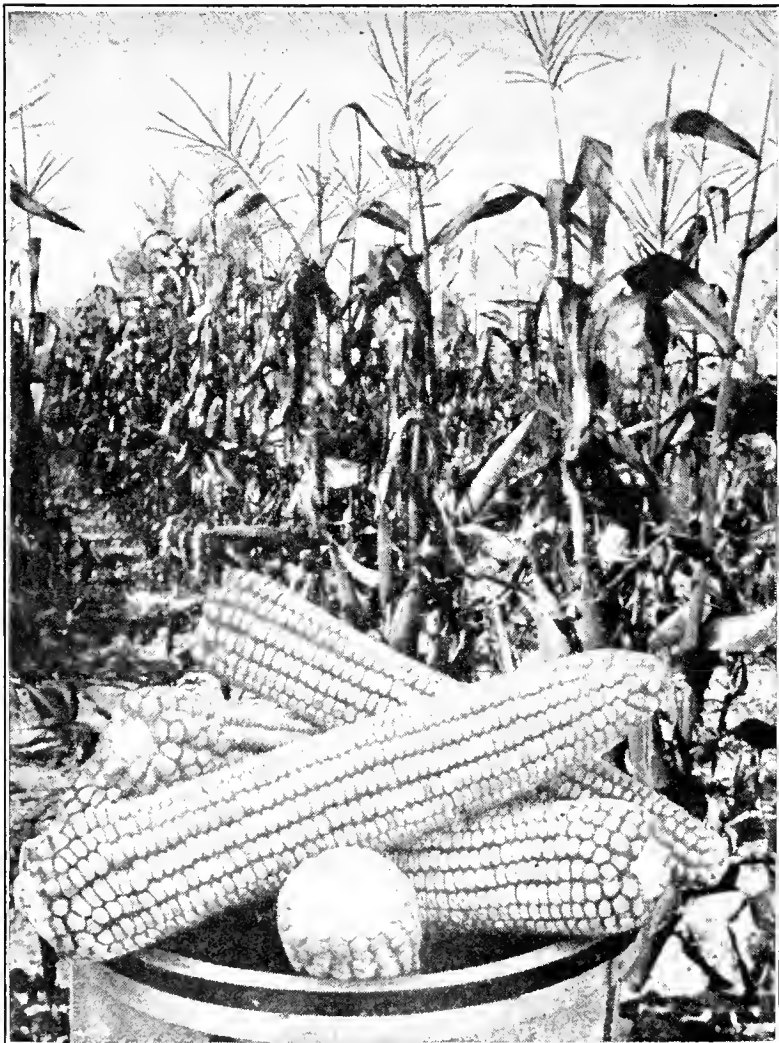
BOUNTIFUL YELLOW DENT

This is one of the most profitable varieties to grow, and is very popular in this part of Pennsylvania. It matures in 105 days, or about 10 days later than Improved Leaming. Because of its great root development it will withstand more drought throughout the season than any other variety. It is an exceptionally strong, robust grower, and is considered one of the best varieties in cultivation where the season is not too short. We do not recommend it in the extreme northern part of Penna. and N. Y. State. The ears attain an immense size, and because of its medium sized cob makes it a profitable Corn to shell. One bushel shelled corn will plant eight acres. See price list.

ROHRER'S

90-DAY YELLOW DENT

This is the earliest variety listed. It is a splendid golden yellow, beautiful colored Yellow Dent Corn. The ears grow to a fairly good size, 7 to 9 inches long, with 16 to 18 rows per cob. On a beautiful red cob. Its grains are of good length, and the fodder grows 8 to 11 feet high. Where the season is short you will find this variety profitable to grow. See price list.



Lancaster County Sure Crop Corn



Bountiful Yellow Dent

LANCASTER COUNTY SURE CROP

This is one of the best varieties for cribbing as well as a silage Corn. It is recommended very highly by many Farm Bureau Agents, and some of the best Dairy Farmers grow this corn exclusively for ensilage. The fodder is very tall and leafy. It withstands drought and develops ears early. The ears are very long, but not very thick. The grains are filled out well at both ends; the cob is very thin and therefore shells very easily. Lancaster County Sure Crop contains more protein than any other Corn we know. It is a sure cropper and will mature in any part of Penna. and Ohio. See price list.

RED COB WHITE ENSILAGE

A long narrow white grain and is sold as a special Ensilage Corn. Grows tall and is prolific in leaves. In the North where the season is short the corn will not fully mature. We can recommend this variety where the season is not too short. We furnish a fine quality seed. All our Seed Corn germinates 90% or better. See price list.

Dear Sirs:—

The Oats were received in very good condition and I am well pleased. They are even better than the sample. Thanking you,

Danielsville, Pa., April 28, 1931.

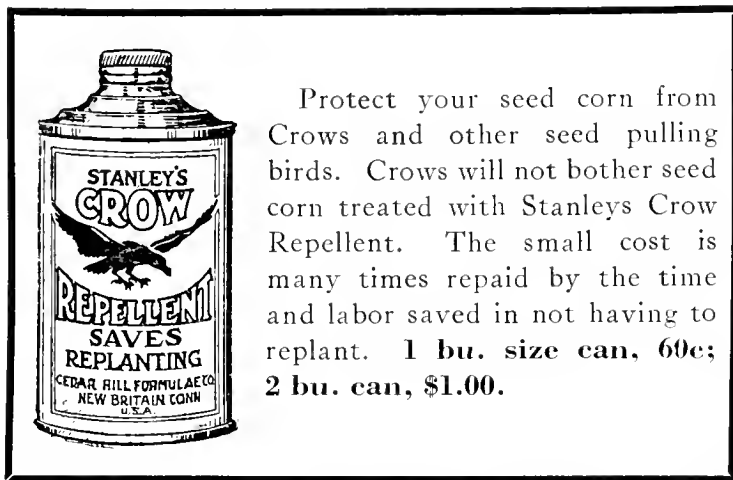
Yours respectfully,
Henry M. Grimm.

HEAVYWEIGHT SURE CROP

ATTENTION, FARMERS! Here is just the type of corn you've been wanting for years. A type which combines all the good qualities of both our Yellow Dent and Sure Crop varieties, and eliminates the poor qualities of each. This corn, developed in the eastern section of our rich Garden Spot County, has increased rapidly in demand among local farmers, and now after several very successful years of growth we are assured it is just the type a great many farmers are seeking.

It matures about as early as our famous Lancaster County Sure Crop and grows just about as tall. It ears very close to the ground, a factor which holds it erect throughout the season, and frequently one stalk will produce two large ears. It produces a very close grained, compact, full ear, oftentimes reaching 12 inches in length and from 2 to 2½ inches in diameter with but a very thin cob. The grains are deep and broad and have a light cap, giving the ear a light yellow color.

With these qualities combined there is not another variety grown that will give you as much good, solid corn as this newest of all varieties. Be sure to try several acres this year and you will never want anything else. See price list.



Protect your seed corn from Crows and other seed pulling birds. Crows will not bother seed corn treated with Stanley's Crow Repellent. The small cost is many times repaid by the time and labor saved in not having to replant. 1 bu. size can, 60c; 2 bu. can, \$1.00.

MARQUIS SPRING WHEAT (Beardless)

Marquis Spring Wheat is undoubtedly the heaviest yielding type in existence today, and anyone needing Spring Wheat will certainly do well to order this splendid variety. Remarkably early, productive, unexcelled in milling qualities. The seed we offer is grown in the Northwest. Our stock is clean and pure, and we believe as nice as ever has been offered for sale. See price list.

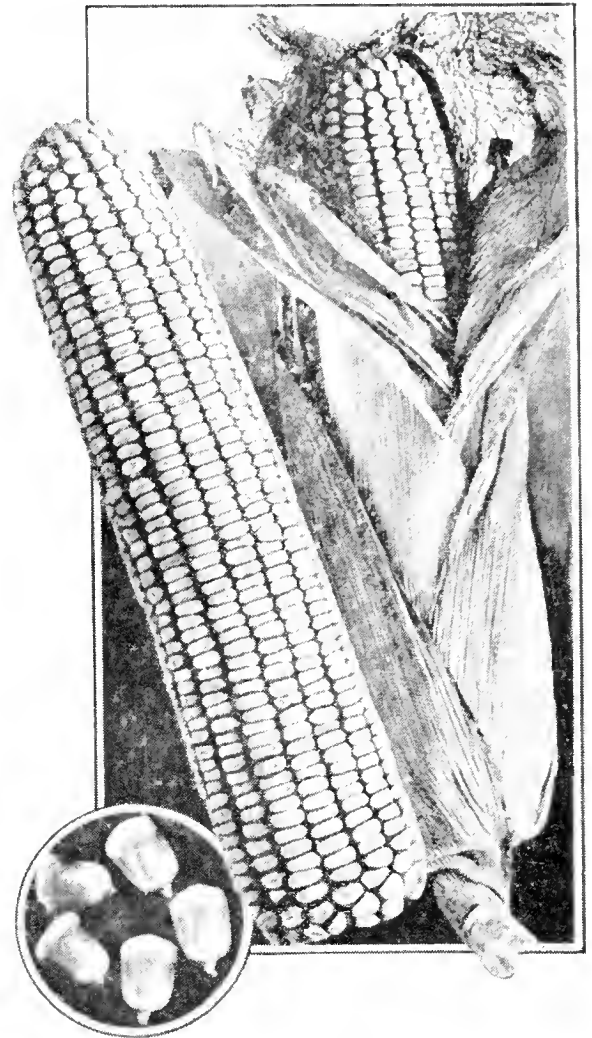
MILLETS

GOLDEN MILLET, also known as *German Millet*, is the best for hay or fodder. When cut in full bloom the quality is exceptionally good and all kinds of stock relish it. On good soil a yield as high as five tons per acre may be expected. Sow 35 pounds per acre. See price list.

JAPANESE MILLET (*Billion Dollar Grass*). The best soil on which to grow this Millet is that which is in fair condition of fertility and inclined to be wet rather than dry. Japanese Millet is adapted to all seasons. It will grow six to eight feet high. It is excellent for silage. It is fully equal to the best corn fodder as a food for milch cows. The seed may be sown broadcast at the rate of 20 to 25 pounds per acre. This variety stools remarkably and should not be sown too thick. See price list.

DWARF ESSEX RAPE

This plant is a valuable forage crop. One acre of it will pasture more hogs, sheep and cattle than four acres of Clovers or other grasses. As a healthy fattening pasture food it has no equal. It is an annual, producing large leaves, and can be sown any time from early Spring until September, and is ready for pasture 6 to 8 weeks after sowing. It stands out without a rival for cheapness and effectiveness. Sow four to five pounds per acre, broadcast. See price list.



SAND OR HAIRY VETCH

Also known as Winter Vetch. It is a rapid grower and thrives on little moisture. It is a winter annual and can be sown Spring or Fall. Stays green all winter furnishing an abundance of pasture until early Spring to late in Fall. It is a tremendous yielder, producing 15 to 20 tons green forage per acre. As a fertilizer it has few equals, as it grows on poor soils exceedingly well, and a crop of vetch plowed under is claimed to be equal to \$20 to \$40 worth of Commercial Fertilizer. Sow about 40 pounds Vetch and about one-half bushel of Oats or Barley. The grain sown with Vetch will act as a support for the vines. Vetch should be inoculated with Stimugerm for best results. See price list.

BUCKWHEAT

Buckwheat can be planted from June 1st to middle of July and is used much by farmers having vacant land upon which they were unable to get planted an earlier crop, or upon land where another crop has failed. Buckwheat does well on poor soil and makes one of the best fertilizer crops to turn under. A small patch planted near the poultry yard can be harvested by the chickens. Sow one bushel per acre.

JAPANESE. This is the standard and most popular variety of Buckwheat, and ripens a week earlier than the Silver Hull. It is the most productive and prolific variety in cultivation. It resists drought and blight well. See price list.

SUDAN GRASS

Sudan Grass is a tall grass, which grows from four to seven feet high. The stems are small and leafy. It is like the Sorghum or Millets, and must be started each Spring. It is easily cured for hay and stock will eat it readily. May be cut from two to four times in one year. The crop should be cut for hay as soon as the grass is full headed, and early cutting is advised when the crop is to be used for hay. See price list.

Your order for seed potatoes will be booked for future shipment at present low prices, if \$2.00 cash per sack is sent with order. Save money.

SOY BEANS



Wilson's' Soy Beans

WILSONS'. This is the most popular variety in cultivation. This is an early sort that will mature seed in Penna., Ohio and N. J. On account abundant growth of slender stems and branches the Wilson makes the best sort to grow for Hay. This is also an excellent sort to grow for seed and ensilage. Will do well on poor soils and produce a large crop of beans, but we would recommend good soil for hay, forage, soiling, silage or green manure. See price list.

The Soy Bean is a crop of interest to all classes of farmers, and is bound to establish itself as one of the most valuable additions to American agriculture. No crop has gained popularity as rapidly as Soy Beans. On land too poor to grow Clovers, Soy Beans and Cow Peas can be made to produce great quantities of feed and will increase the fertility while doing it. Soy Beans should not be planted until the ground is warm. About ten days after corn planting would be safe. Soil should be well prepared, just the same as you would for corn. Seed should be covered about one and one-half inch deep. Can be sown broadcast or drilled in. When drilled with grain drill sow one and one-fourth bu. per acre. Broadcast will require one and one-half bushels per acre. Sowing them in rows of 24 to 32 inches apart and two to three inches in the row will save seed and you will be able to cultivate your crop. Cultivate it as often as you would Corn. This method of planting will require 20 to 30 pounds per acre, depending on the width of the rows.

**INOCULATE
THIS SEED WITH
STIMUGERM**

The growing of Soy Beans has long since passed the experimental stage. Their adaptation to all parts of the country, and their value and place in agriculture apparently surpassing all other legumes, has been determined. Their high feeding value and their usefulness as soil improver makes them valuable additions to our list of field crops.

MAMMOTH YELLOW. This is a medium maturing variety. Will not mature seed in Pennsylvania and Ohio. Will grow on barren soil that does not have sufficient fertility to grow other plants. Planted largely as ensilage with corn, or for forage and turned under for soil improvement. Not such a good variety for hay, grows very tall, and is coarser in texture than Wilson. Will make more growth, and more bulk for silage than any other variety. See price list.

MANCHU. This variety has been very popular in Penna. and Ohio. It is a general all purpose Bean, and has few rivals. Can be used for Hay, and a good variety for hogging down. Does not shell out easily. A good Yields for seed purposes. Grows Tall, erect and bushy. Matures Beans in about 110 days in a normal season. See price list.

CANADA FIELD PEAS

The demand for Canada Field Peas increases every year. It is used both as a green feed and as a fertilizer and the amount of feed produced per acre is very large. Valuable feed for hay or soiling. It is readily eaten by all kinds of stock, and is as nourishing as can be desired. It ranks very high as a fertilizer, either when plowed under or pastured off. We would advise every farmer to use Field Peas more liberally than many of them have been doing in the past, knowing that they will be pleased with the results. Canada Field Peas are mostly sown with Oats. When growing they furnish the nitrogen so much needed by all soils. As a forage for dairy cows and hogs they stand in the front ranks. There is no crop that we can so heartily recommend. They are perfectly hardy and will do on any soil adapted to Oats or Wheat. Canada Field Peas are most profitable when sown with Oats. The Oats will support the vines, and lessen trouble to harvest. Sow $1\frac{1}{2}$ bushels of Peas per acre, and about the same amount of Oats. Peas should be drilled first about $3\frac{1}{2}$ inches deep and the Oats sown 2 inches deep. See price list.

**INOCULATE
THIS SEED WITH
STIMUGERM**

It will pay you to inoculate your Peas with Stimugerm. Great quantities of Stimugerm are used each season to inoculate the seed for Canada Field Peas.

TOBACCO SEED

Lancaster County Red Rose

Seed Leaf Type. Best for size, weight and quality. Does not easily shoot in dry weather. Fewer suckers than other varieties. Stands up well and is a profitable sort to grow.

Sprout seed and sow in hot bed early in April. Plants, when developed, should be transplanted in rows about 32 inches apart and 24 inches on the row.

$\frac{1}{2}$ ounce will sow 200 to 250 square feet.

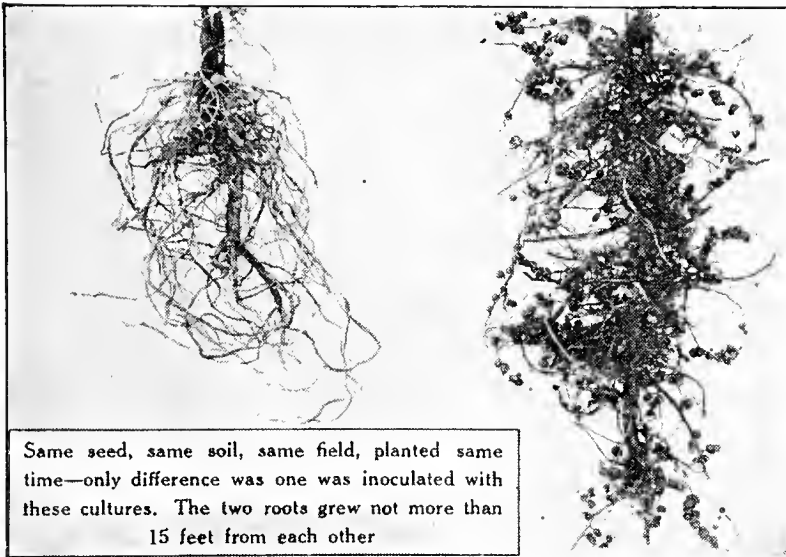
By mail, postpaid, $\frac{1}{2}$ oz., 40c; oz., 75c.

STIMUGERM

LEGUME INOCULATION

*The Best Inoculation
for All Legume Seeds*

**MEANS BETTER SOILS
BETTER CROPS
LESS FERTILIZER EXPENSE**



Same seed, same soil, same field, planted same time—only difference was one was inoculated with these cultures. The two roots grew not more than 15 feet from each other

Seeds of all legumes—Clovers, Alfalfa, Sweet Clovers, Beans, Peas, Vetches, Soy Beans, Cow Peas, etc.—will yield far better results if inoculated with STIMUGERM, and, in addition leave in the soil a heavy deposit of nitrogen which benefits all succeeding crops in the rotation.

A Sensible Insurance and a Profitable Investment

STIMUGERM is a pure culture of nitrogen-fixing bacteria selected for maximum vitality and ability to transform the nitrogen from the air into soluble nitrates and deposit them in the soil.

We believe in inoculation, we favor the pure jelly medium, and we believe in STIMUGERM. Of all the inoculants manufactured we believe it is the most effective and cheapest, consistent with high quality. Farmers who have used it will never again seed without it—even where the legumes have been grown before, because it is easier to make Better Best than Bad Good.

Full directions go with each bottle—easily applied—takes but a little time.

The organization which manufactured Farmogerm for ten years found it necessary to establish their own company, namely, Stimulant Laboratories, Inc., and establish their own cultures of nitrogen-fixing bacteria for legumes, namely, Stimugerm. You will not suffer in any way from this change of brand name as you will be getting a product fully equal in quality to that which you have had before, manufactured under the same bacteriological supervision.

WHAT

STIMUGERM

LEGUME INOCULATION

WILL DO

STIMUGERM will reduce your fertilizer bills, give you larger crops, and improve your soil by producing nodules on the roots of legumes, as shown in the illustration above. No other inoculant is as strong and virile. No other inoculant will give the profusion of nodules.

When ordering, be sure to state what crops you wish to inoculate.

STIMUGERM is so inexpensive and is so effective an insurance that you cannot afford to sow legume crops without it.

NEW LOW PRICES

For small seeds—Clovers, Alfalfa, etc.

1/4-bu. size.....	\$0.35	1 -bu. size	\$1.00
1/2-bu. size.....	.60	2 1/2-bu's. size.....	2.25
10-bu's. size.....	\$8.00		

Special Reduced Prices on Cultures for Large-Size Seeds—Soy Beans, Cow Peas, Peas, Beans, etc.

1/2-bu. size.....	\$0.35	2-bu's. size.....	\$1.10
1-bu. size.....	.60	5-bu's. size.....	2.25

Special Garden Size for Garden Peas, Beans and Sweet Peas, 25c.



Mrs. W. F. Ruhl, Mifflinburg, Pa., writes us that our "New Century Beet is the best I have ever used, tender even when quite large."

For a Higher Yield . . .

Plant ROHRER'S Tested Garden Seeds



The Advantages of Ordering Early

The folks who order their seeds early obtain the benefit of larger varieties and better prices. As the season progresses the varieties are fewer and we must pay higher prices on late shipments. Buy as early as possible and have the seed ready when you are ready to sow. And remember: **You** must be satisfied with every seed purchase made from this catalog. If it isn't as high a

quality or higher than we represent it—send it back and your money will be refunded promptly.

Free Postage on Garden Seed

We pay the postage on all garden seeds anywhere in the United States at prices quoted in the catalog. Onion Sets in larger quantities than quoted are F. O. B. Smoketown. Freight or express collect. **See price list.**

ASPARAGUS

MARY WASHINGTON. This is a highly rust-resistant variety of Giant Asparagus. Makes rapid growth, is very tender, which makes it the best of all for market value. Mary Washington is without doubt the best strain known. **Seed, by mail, postpaid, pkt., 10c; oz., 20c; ¼ lb., 45c; ½ lb., 80c.; lb., \$1.50; 5 lbs., \$6.25.**

PALMETTO. An early prolific, regularly developed type of Asparagus, of the Southern Seaboard. First grown in South Carolina. Planted extensively. Large, thick, dark green shoots with distinctively pointed tips. One ounce seed will plant about 50 feet and produce about 200 plants. **By mail, postpaid, pkt., 5c; oz., 10c; ¼ lb., 25c; lb., 70c.**

BEANS

CULTURE. No crop responds more rapidly than Beans to good soil and cultivation. Beans are very sensitive to both cold and wet, and should not be planted before the ground is warm and dry. Keep them well hoed and cultivated, but only when ground is dry. Working when wet makes them more liable to rust and will injure the crop. The varieties we offer have been selected with great care, and we have every reason to believe that they will give perfect satisfaction. One pound will plant about 100 feet.

BURPEE'S STRINGLESS GREEN POD. This old variety is steadily growing in popularity, because of its hardiness. The rich green pods are almost round, and mealy. Absolutely stringless, even after fully matured. It is tender and of delicious flavor, and should have a place in every garden. **By mail, postpaid, pkt., 10c; ½ lb., 20c; lb., 35c; 2 lbs., 65c; 5 lbs., \$1.40; 10 lbs., \$2.50.**

BOUNTIFUL. One of the first in bearing and yields for a long period. An especially good bean for the market or home garden. It is generally considered to be one of the best flat green podded bush beans. Pods are large, solid and stringless, retaining tenderness even when past maturity. Most popular early variety. **By mail, postpaid, pkt., 10c; ½ lb., 20c; lb., 35c; 2 lbs., 65c; 5 lbs., \$1.40; 10 lbs., \$2.50.**



Burpee's Stringless Green Pod

RED KIDNEY. A standard old variety that is very popular. It is grown almost exclusively for the dried beans, which are long, oval and purplish in color. The plant is dwarf. **By mail, postpaid, pkt., 10c; ½ lb., 20c; lb., 35c; 2 lbs., 60c; 5 lbs., \$1.25.**

Include "New Century Beets" on your order. You'll find them one of the best beets you could grow

BUSH BEANS—25% Less

Here we offer four of the finest strains of of bush beans.

Green Bountiful Stringless Green Pod
Yellow Bountiful Burpee's Brittle Wax

4—10c. Packets only **30c**
1 of each kind

4—1/2 lb. Pkgs only **60c**
One of each kind. Value 80c.

BEANS (continued)

RED VALENTINE. An extra early variety that usually matures in 35 to 40 days; also fine for mid-summer growing to ripen in September. The vigorous bushes bear an abundance of medium length green pods which are fleshy, crisp and tender. **By mail, postpaid, pkt., 10c; 1/2 lb., 20c; lb., 35c; 2 lbs., 60c; 5 lbs., \$1.25; 10 lbs., \$2.25.**

WHITE MARROW. A dwarf variety that is largely planted and used both as a string and shell bean. A profitable sort for market gardeners to grow, and a necessary one for the home garden. The dried beans are large and white, oval in shape. **By mail, postpaid, pkt., 10c; 1/2 lb., 20c; lb., 30c; 2 lbs., 55c; 5 lbs., \$1.25; 10 lbs., \$2.00.**

WHITE NAVY. Also called Pea Bean. A good sort for either market or home use. It is smaller than the White Marrow, but is of fine flavor and is the variety used in making the famous "Boston Baked Beans." Very productive and is largely planted everywhere. Dry Beans small and pure white. **By mail, postpaid, pkt., 10c; 1/2 lb., 20c; lb., 30c; 2 lbs., 55c; 5 lbs., \$1.25; 10 lbs., \$2.00.**

Yellow or Wax Podded Varieties

PENCIL POD or BLACK WAX. Pods round, meaty and stringless. A fine bean for the home garden and for home canning. **By mail, postpaid, pkt., 10c; 1/2 lb., 20c; lb., 35c; 2 lbs., 65c; 5 lbs., \$1.40; 10 lbs., \$2.50.**

IMPROVED GOLDEN WAX. Rust proof, a great improvement over the old Golden Wax. Pods 4 to 5 inches long, golden yellow, very fleshy, and one of the best beans to use either as a snap or shelled. Ready for picking 45 days from planting. Improved Golden Wax, in our judgment, is the best from every standpoint. **By mail, postpaid, pkt., 10c; 1/2 lb., 20c; lb., 35c; 2 lbs., 65c; 5 lbs., \$1.40; 10 lbs., \$2.50.**

BURPEE'S BRITTLE WAX or ROUND POD KIDNEY WAX. This is probably the earliest of Wax Beans. The pods are round, fleshy, brittle and stringless. In quality it is among the very best. It is extremely early and very productive, making it a favorite everywhere. **By mail, postpaid, pkt., 10c; 1/2 lb., 20c; lb., 35c; 2 lbs., 65c; 5 lbs., \$1.40; 10 lbs., \$2.50.**

ROHRER'S YELLOW POD BOUNTIFUL BEAN. The Yellow Pod Bountiful Bean is the earliest of all Yellow Beans and absolutely stringless. The pods are long, thick and very meaty. It is the best of all Yellow Beans. **By mail, postpaid, pkt., 10c; 1/2 lb., 20c; lb., 35c; 2 lbs., 65c; 5 lbs., \$1.40; 10 lbs., \$2.50.**

Pole or Cornfield Beans

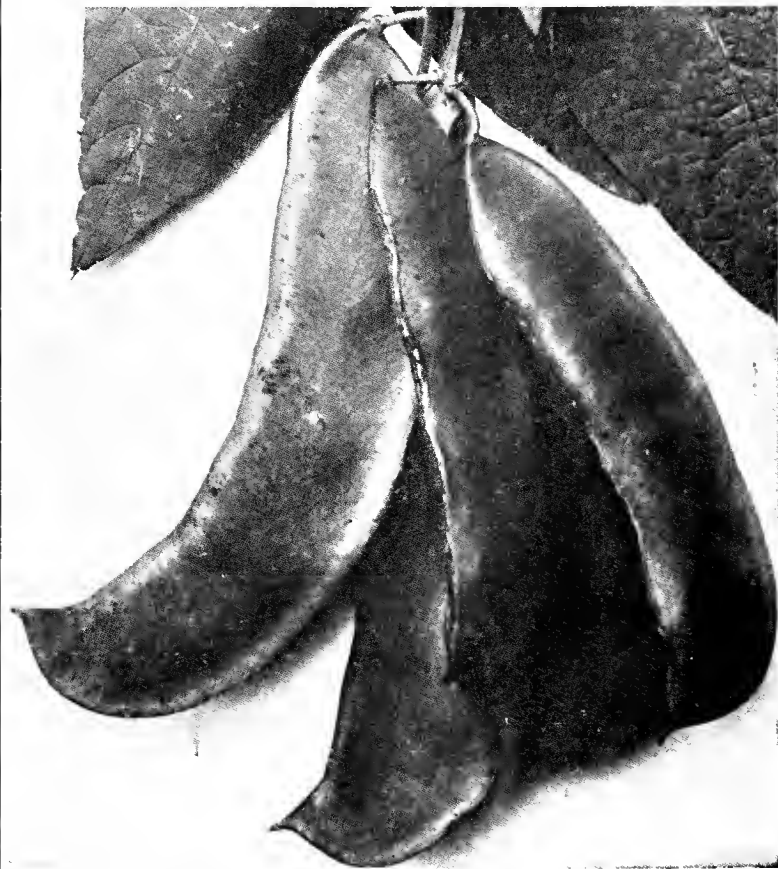
KENTUCKY WONDER. The most popular and generally grown of all Pole Beans. A continuous bearer and almost rust proof. The long pods are stringless, crisp and tender. **By mail, postpaid, pkt., 10c; 1/2 lb., 20c; lb., 35c; 2 lbs., 60c; 5 lbs., \$1.35.**

SCOTIA or STRIPED CREASEBACK. One of the very best string Beans. Very tender and delicious. Can very easily be planted in corn. Pods are long, perfectly round, entirely stringless and of the highest quality. They have a rich melting flavor. They commence to bear as soon as the early Bush Beans are gone. Be sure to include some of this variety with your order. **By mail, postpaid, pkt., 10c; 1/2 lb., 20c; lb., 35c; 2 lbs., 65c; 5 lbs., \$1.40.**

GOLDEN CLUSTER WAX. An extra strong grower and very productive. The flat stringless pods are large, 7 to 8 inches long, and three-fourths inch wide, and are borne in clusters. Rich golden yellow of excellent flavor, and remain fit for use for a long time. Vines bear continuously. One of the best yellow podded Pole Beans. **By mail, postpaid, pkt., 10c; 1/2 lb., 20c; lb., 35c; 2 lbs., 65c; 5 lbs., \$1.50.**

LAZY WIFE. The best late green podded Pole Bean. An extremely heavy yielder of broad, thick, fleshy, dark green pods, which are entirely stringless, averaging 6 inches long. The dry beans are excellent for winter use. **By mail, postpaid, pkt., 10c; 1/2 lb., 20c; lb., 35c; 2 lbs., 65c; 5 lbs., \$1.40; 10 lbs., \$2.25.**

BUSH LIMA BEANS



Fordhook Bush Lima

FORDHOOK LIMA. The bush is of erect growth, holding the pods off the ground, so that they are not injured by wind and rain. Very prolific. Pods contain four or five large flat Beans and are very easily shelled. The green Beans, when full size, are tender, juicy and sweet. **By mail, postpaid, pkt., 10c; 1/2 lb., 25c; lb., 40c; 2 lbs., 75c; 5 lbs., \$1.85; 10 lbs., \$3.25; 100 lbs., \$28.00.**

BURPEE'S BUSH LIMA. A good standard variety that grows about 18 inches high. Pods average six inches long and 1 1/4 inches wide. Pods are borne in clusters of five to eight. The pods are well filled with very large beans, identical in size and luscious in flavor as the large white Pole Lima. **By mail, postpaid, pkt., 10c; 1/2 lb., 20c; lb., 35c; 2 lbs., 65c; 5 lbs., \$1.50; 10 lbs., \$2.75.**

If you haven't included the "Special Offer of Bush Beans" in your order--please read it again. The best of the strains--and a bargain.

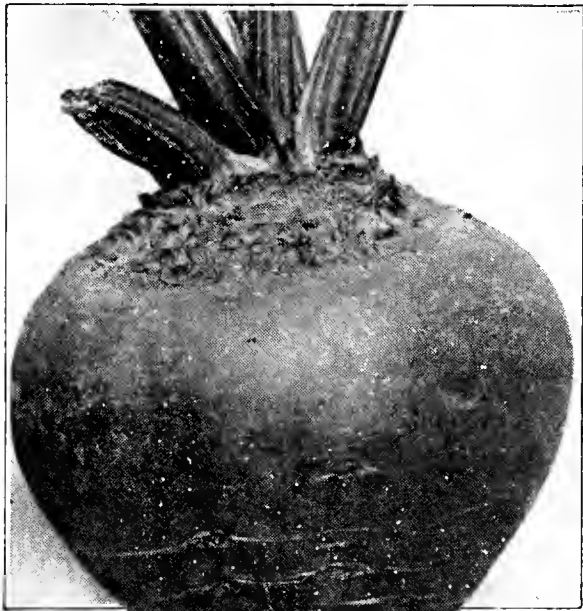
POLE LIMA BEANS

POLE LIMA—KING OF THE GARDEN. A vigorous grower, producing an abundance of large dark green pods which frequently contain five or six large Beans of the most excellent quality. The best of all Pole Limas. Dry beans are large and flat. **By mail, postpaid, pkt., 10c; ½ lb., 20c; lb., 35c; 2 lbs., 65c; 5 lbs., \$1.50; 10 lbs., \$2.75.**

IMPROVED CHALLENGER. Also known as Potato Lima. Very early and produces large clusters until frost. Beans are thick, fleshy, cook mealy, and very delicious. About same shape and size as Fordhook. Shells out more beans than any other pole lima. Cannot be excelled for home and market garden. **By mail, postpaid, pkt., 10c; ½ lb., 25c; lb., 40c; 2 lbs., 75c; 5 lbs., \$1.75; 10 lbs., \$3.00.**

BEETS

CROSBY'S EGYPTIAN. An extra quick grower. Suitable for forcing or growing outdoors. Smooth turnip shaped. Roots averaging two inches in diameter. Beets are tender and of good flavor. **By mail, postpaid, pkt., 5c; oz., 10c; ¼ lb., 30c; lb., \$1.00.**



Detroit
Dark Red

DETROIT DARK RED.

An ideal beet for home and market garden. The roots are globe shaped, dark red and uniformly smooth. When young the flesh is almost black-red, turning to dark crimson. They are an appetizing dark red when cooked and are very sweet. Every garden should contain some of these delicious beets. **By mail, postpaid, pkt., 5c; oz., 10c; ¼ lb., 30c; lb., \$1.00.**

ROHRER'S NEW CENTURY BEET. If you want a beet that will stay tender and sweet all summer and winter, plant the New Century Beet. The best table beet we have ever eaten. Large or small they are tasty and tender. This beet is very deep red and tops are green. **By mail, postpaid, pkt., 10c; oz., 20c; ¼ lb., 60c; ½ lb., \$1.10; lb., \$2.00.**

EARLY BLOOD TURNIP. A fine early strain good for summer and autumn use. The dark red roots are very sweet and tender, with a fine flavor. **By mail, postpaid, pkt., 5c; oz., 10c; ¼ lb., 30c; lb., \$1.00.**

STOCK BEETS or MANGELS

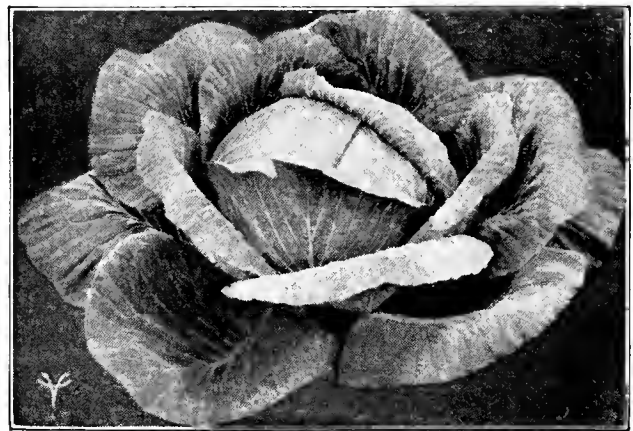
MAMMOTH LONG RED. This is a particularly good variety, having long roots, 5 to 6 inches in diameter. The skin is bright red and the flesh white with veined rings of rose pink. Enormously productive. **By mail, postpaid, pkt., 5c; oz., 10c; ¼ lb., 20c; lb., 55c; 5 lbs., \$2.25; 10 lbs., \$4.00.**

GOLDEN TANKARD. A heavy cropper on good land and easily harvested. The large sweet yellow roots are much relished by stock. One of the best of the Mangels. **By mail, postpaid, pkt., 5c; oz., 10c; ¼ lb., 20c; lb., 55c; 5 lbs., \$2.25; 10 lbs., \$4.00.**

CABBAGE

COPENHAGEN MARKET. The earliest round head Cabbage we know of. As early as Wakefield and has larger heads. Heads are uniform, practically every plant making a good firm head. It is a vigorous grower and keeps well. Stands longer in field without bursting. **By mail, postpaid, pkt., 10c; oz., 35c; ¼ lb., \$1.00; lb., \$3.50.**

EARLY JERSEY WAKEFIELD. Wakefield cabbage is grown in nearly every garden and among the market growers it is planted almost entirely for first early. Pointed heads of good size, very uniform and compact. **By mail, postpaid, pkt., 5c; oz., 25c; ¼ lb., 70c; lb., \$2.25.**



Golden Acre

GOLDEN ACRE CABBAGE. The Earliest Heading Cabbage in cultivation. Heads are solid, good size, delicious flavor, tender and productive. Very hardy permitting earliest planting. We recommend Golden Acre Cabbage to the Market Gardener and private planter. **By mail, postpaid, pkt., 10c; oz., 50c; ¼ lb., \$1.25; lb., \$4.00.**

LATE FLAT DUTCH. One of the best known cabbages and one of the most reliable. It produces immense heads of excellent quality which keeps well all winter. **By mail, postpaid, pkt., 5c; oz., 25c; ¼ lb., 80c; lb., \$2.25.**

SUCCESSION. Especially recommended for its uniform size, shape and reliability for heading. Makes a deep, flat head, solid and uniform in color. Its tenderness is unsurpassed. Can be grown for fall or winter use. **By mail, postpaid, pkt., 5c; oz., 25c; ¼ lb., 70c; lb., \$2.25.**

*If you eat one of the new Rohrer Musk Melons you'll wish you had ordered more than you did.
Add a quantity to your order.*

CABBAGE (continued)

PENN STATE BALLHEAD (Short Stem). A very desirable late variety developed by Prof. C. E. Myers at the Pennsylvania Agricultural Experiment Station. Test made, on a measured acre, at the Experiment Station, produced 23.76 tons of marketable heads. This is the heaviest producing strain of Danish Ballhead. The heads are round, solid, uniform, heavy and of good quality. Splendid winter keeper. **By mail, postpaid, pkt., 10c; oz., 60c; ¼ lb., \$1.75; lb., \$6.00.**

HOUSER. The largest hard heading cabbage grown. Best winter keeper. Small heart with fine ribs. Grows vigorously and resists drought well. Requires a week or two longer to mature than other late sorts. Fine quality and profitable to grow. **By mail, postpaid, pkt., 10c; oz., 40c; ¼ lb., \$1.00; lb., \$3.75.**

DANISH BALLHEAD (Short Stem). This is the most popular Winter Cabbage known. The heads are nearly round, very solid, well flavored and firm grained making it the best variety for winter use. Its fine quality causes it to be more largely planted than any other variety. **By mail, postpaid, pkt., 5c; oz., 30c; ¼ lb., 90c; lb., \$3.00.**

GLORY OF ENKHUIZEN. The round ball-like heads are produced as early as "All Season." Heads are of medium size, weighing 6 to 8 pounds when trimmed. Very solid, with few outer leaves, permitting close planting. Keeps well in winter. Very tender and fine flavored. **By mail, postpaid, pkt., 5c; oz., 30c; ¼ lb., 90c; lb., \$3.00.**

AMERICAN SAVOY. The best all around Savoy Cabbage. Heads are large in size and extremely solid. **By mail, postpaid, pkt., 5c; oz., 25c; ¼ lb., 80c; lb., \$2.25.**

CELERY

GOLDEN SELF BLANCHING. A very good self blanching celery. It is a vigorous compact grower with straight, rich, golden yellow stalks of excellent quality, being remarkably crisp, tender and free from stringiness. Our American seed is of the highest quality and the best that can be obtained. **By mail, postpaid, pkt., 10c; oz., 40c; ¼ lb., \$1.25; lb., \$4.50.**

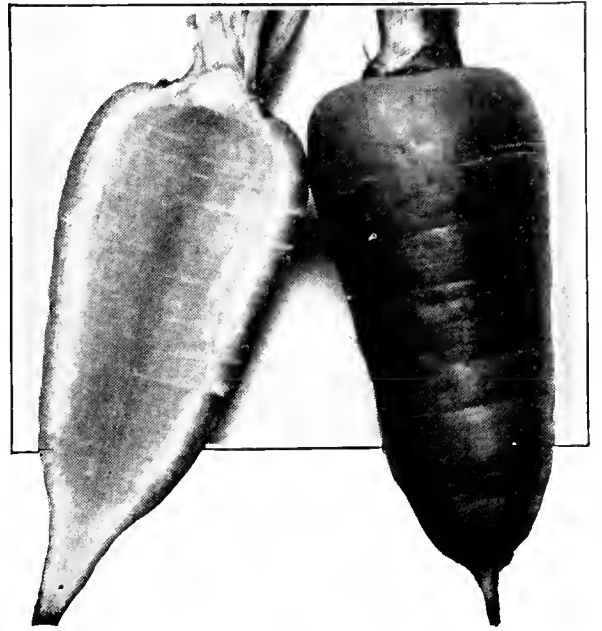
EASY BLANCHING CELERY. Slightly taller than Golden Self Blanching, and about two weeks later. A favorite variety with market gardeners. Very crisp and thick. **By mail, postpaid, pkt., 10c; oz., 40c; ¼ lb., \$1.25; lb., \$4.50.**

GIANT PASCAL. One of the finest of the fall and winter sorts. The stalks are very thick, large, solid and crisp, with a delicious nutty flavor free from bitterness. **By mail, postpaid, pkt., 5c; oz., 20c; ¼ lb., 75c; lb., \$2.50.**

GOLDEN PLUME. A large early celery of superior quality and appearance. Blanches quickly with a full heart of rich golden yellow color. Very resistant to blight and rot. One of the finest celeries introduced. **By mail, postpaid, pkt., 10c; ¼ oz., 35c; oz., \$1.00; ¼ lb., \$3.00; lb., \$10.00.**

HOUSER CELERY. One of the best varieties for home use or for market, with its sweet, luscious, rich, nutty flavor. When bleached it becomes a beautiful creamy white, full of hearts and every stem of it to the outside is delicious. Keeps well in winter. **By mail, postpaid, pkt., 10c; oz., 50c; ¼ lb., \$1.50.**

BURPEE'S FORDHOOK. The largest, most solid and finest nut flavored Celery in existence. Introduced by Burpee in 1915. The quality became known to celery growers a few years after introduction. Grows compact and is easily blanched. It is unsurpassed in every respect, and commands a higher market price than any other variety. **By mail, postpaid, pkt., 10c; oz., 35c; ¼ lb., \$1.25; lb., \$4.00.**

CARROTS

Danvers Half Long

DANVERS HALF LONG. One of the most productive and is adapted to all soils. The roots grow from seven to eight inches long. This variety is valuable for stock feeding as well as for market. Very high yields. **By mail, postpaid, pkt., 5c; oz., 10c; ¼ lb., 25c; lb., 80c.**

CHANTENAY. The most popular Carrot for table and market. The roots average five inches in length. The flesh is tender, fine grained, free from hard core, and deep orange in color. A very choice early variety. **By mail, postpaid, pkt., 5c; oz., 10c; ¼ lb., 25c; lb., 80c.**



Burpee's Fordhook

SEMESAN—A fine seed disinfectant. Place a small quantity with the seeds in a jar. Shake vigorously for a few moments. Bacteria and fungus spores adhering to the seeds are instantly killed. See p. 29

CAULIFLOWER

CULTURE. For earliest Cauliflower plant seed in greenhouse or boxes in the house in February. Transplant in cold frames or flats, two to three inches apart. Set in open ground as soon as land can be prepared. For late Cauliflower plant in open ground like cabbage.

SNOWBALL. There is no better Cauliflower than the Snowball variety, and our strain is as fine as can be had at any price. The seed we offer is our own, direct importation from most noted grower in Holland. It is the best the world affords, and quality considered our prices are very reasonable. It is not the earliest to be had, but a remarkably sure header, making large, solid, perfect, pure white heads of the finest quality. We recommend it also for late summer and fall planting. **By mail, postpaid, pkt., 20c; ¼ oz., 50c; ½ oz., 90c; oz., \$1.50; ¼ lb., \$5.00; lb., \$18.00.**

CUCUMBER

DAVIS PERFECT. A very vigorous grower, producing an abundance of fine textured, excellent flavored fruits, seven to nine inches long and seven inches in circumference in the middle. The spine is dark rich green and the flesh is fine for slicing. The fruits are very handsome and regular in shape. **By mail, postpaid, pkt., 5c; oz., 15c; ¼ lb., 35c; lb., \$1.00.**

IMPROVED WHITE SPINE. A very good table variety, because of its light green color, which it retains a long time after being pickled. The fruits are nearly cylindrical in form, slightly pointed at the ends. Light green with white spines, very smooth. **By mail, postpaid, pkt., 5c; oz., 15c; ¼ lb., 35c; lb., \$1.00.**

EARLY GREEN CLUSTER. A splendid fruited variety that makes excellent pickles. The vines are very prolific, frequently bearing the fruit in clusters of two and three. **By mail, postpaid, pkt., 5c; oz., 15c; ¼ lb., 35c; lb., \$1.00.**

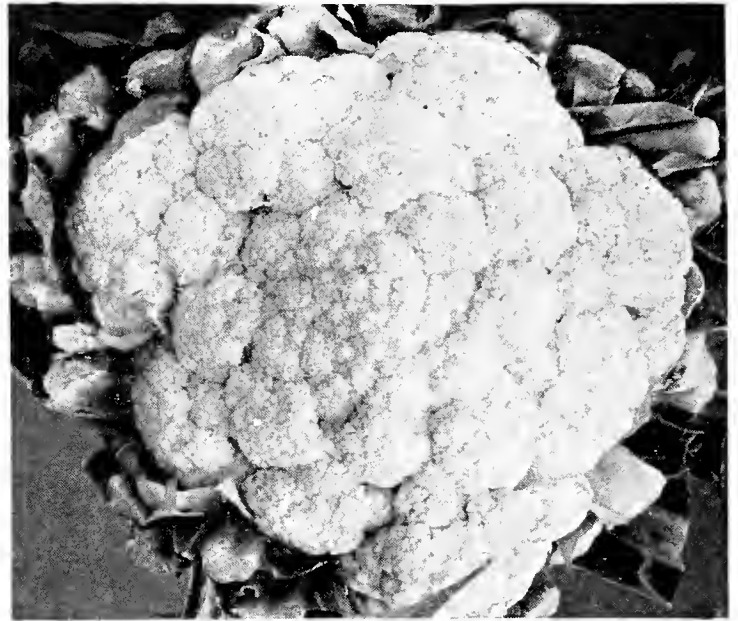


Chicago Pickling

CHICAGO PICKLING. Very prolific and profitable sort for pickles. Very uniform, productive, and excellent for pickling. Fruit straight, square ended, and is medium deep green color. **By mail, postpaid, pkt., 5c; oz., 15c; ¼ lb., 35c; lb., 90c.**

IMPROVED LONG GREEN. One of the best pickling sorts. The vines are very productive of uniform dark green fruits, which are tender, crisp, and of fine flavor. A great favorite with the market gardener. Very heavy yielder. **By mail, postpaid, pkt., 5c; oz., 15c; ¼ lb., 35c; lb., \$1.00.**

WEST INDIA GHERKIN. Short prickly fruit grown extensively for pickling. Tender and crisp when young. Produces large crops of small fruits measuring 2 to 3 inches in length and about 1½ inches thick. Very prolific. **By mail, postpaid, pkt., 5c; oz., 20c; ¼ lb., 50c.; lb., \$1.75**



Snowball Cauliflower

ROHRER'S NEW PERFECTION CUCUMBER. A Great Forcer for Greenhouse or outdoors. An ideal sort for market gardeners and shippers. The deep green color is the crowning merit of this sort. These beautiful dark green fruits sell quickly on all markets. It is a heavy yielder and a profitable variety to grow. **By mail, postpaid, pkt., 5c; oz., 15c; ¼ lb., 45c; lb., \$1.20.**

EVERBEARING. Extremely prolific. Continues to bear throughout the season, and cannot be excelled for large yield. Fruits are dark green, thick in flesh, crisp and tender, average 6 to 7 inches in length. Popular with Market Gardeners. Excellent for pickling and slicing. **By mail, postpaid, pkt., 5c; oz., 15c; ¼ lb., 35c; lb., \$1.00.**

EARLY FORTUNE. The finest type of White Spine introduced. Early, very productive and disease resistant. Flesh white. Fruits nine inches long, slightly tapering. Very firm and crisp. Color rich dark green which does not fade when shipped a long distance. **By mail, postpaid, pkt., 5c; oz., 15c; ¼ lb., 35c; lb., \$1.00.**

ENDIVE

BROAD LEAVED BATAVIA. A heavy cropper that is very hardy. Excellent salads can be made from the broad thick leaves when blanched. **By mail, postpaid, pkt., 10c; oz., 15c; ¼ lb., 30c; lb., \$1.00.**

MOSS CURLED. The leaves of this variety are very finely divided and curled, forming a very attractive plant. It is very tender, of excellent quality, and will in time supplant the other varieties. **By mail, postpaid, pkt., 10c; oz., 15c; ¼ lb., 30c; lb., \$1.00.**

EGG PLANT

CULTURE. Should be sown in a hotbed in February or March and the plants thinned out two to three inches apart when they have reached a height of about two inches. Set out in rich soil, when the weather is warm and settled, two feet apart each way.

BLACK BEAUTY. While the fruit is as large as the New York Improved it matures earlier, and is of a deeper and richer color. The plants are of robust growth and are very prolific. Being nearly two weeks earlier than any other variety, much larger crops are produced before the frost in the North. **By mail, postpaid, pkt., 10c; oz., 35c; ¼ lb., \$1.20; lb., \$4.25.**

Beans treated with SEMESAN JR. survive cold, unfavorable weather much better than untreated beans. Also, you'll find much less anthraxnose injury if you use Semesan Jr. See p. 29.

SWEET CORN

**SWEET CORN
SPECIAL**

40c worth 4 Varieties Only 30c
80c worth 4 Varieties Only 60c

The four best varieties known.

Golden Bantam **Howling Mob**
Eight-Row **Stowells Evergreen**

4—10c Packets.....30c
4—½ lb. Pkgs.....60c

GOLDEN BANTAM. The earliest and sweetest yellow grained sugar corn. Ears are about 5 inches long. The delicious flavor and tender quality when cooked is not surpassed by any other variety of Sweet Corn, and is fast making it one of the most popular for home and market garden. The stalks are dwarf, attaining a height of about four feet. **By mail, postpaid, pkt., 10c; ½ lb., 20c; lb., 30c; 2 lbs., 55c; 5 lbs., \$1.15; 10 lbs., \$2.00; 25 lbs., \$4.25.**

STOWELL'S EVERGREEN. Midseason. More largely planted than any other Sweet Corn for home use, market and canning. The long slender grains are good sized and free from glaze and flintiness. The ears are large and freely produced. It is an exceptionally good canner and remains in good condition for cooking a long time. **By mail, postpaid, pkt., 10c; ½ lb., 20c; lb., 30c; 2 lbs., 55c; 5 lbs., \$1.15; 10 lbs., \$2.00; 25 lbs., \$4.25.**

BANTAM OR GOLDEN EVERGREEN. About 82 days from planting to edible condition. A second early, one of the latest introductions to the sugar corn family. Stalks 7½ to 8 feet high. Ears thick, about 8 inches long. Grains golden yellow, exceedingly sweet. Very productive. **Pkt., 10c; ½ lb., 20c; lb., 30c; 2 lbs., 55c; 5 lbs., \$1.10; 10 lbs., \$2.00. Postpaid.**

HOWLING MOB. Medium early. One of the best flavored and most tender of the medium early varieties. Ears measure seven to nine inches in length, with twelve to fourteen rows of large white pearly grains. The stalks usually produce two ears. **By mail, postpaid, pkt., 10c; ½ lb., 20c; lb., 30c; 2 lbs., 55c; 5 lbs., \$1.10; 10 lbs., \$2.00; 25 lbs., \$4.25.**

BURBANK BANTAM. Grows 4½ to 5 feet high. Ears 7 to 8 inches long, and has 12 to 16 rows to the cob. Has the original Golden Bantam flavor and matures for table use in about 65 days after planting, and excels any other one of the Bantam Corns that we know of. **Pkt., 10c; ½ lb., 20c; lb., 35c; 2 lbs., 60c; 5 lbs., \$1.35; 10 lbs., \$2.50. Postpaid.**

EIGHT ROW. A very profitable sort for home use or market. Ears 7 to 9 inches long, with 8 rows of delicious sweet kernels. Many stalks produce 2 or 3 fully developed ears. Main crop variety. Eating quality can not be excelled. **By mail, postpaid, pkt., 10c; ½ lb., 20c; lb., 30c; 2 lbs., 55c; 5 lbs., \$1.15; 10 lbs., \$2.00.**



GOLDEN BANTAM SWEET CORN

BARDENS WONDER BANTAM SWEET CORN. A new variety of the same type, season, and quality as Golden Bantam, but having a longer ear. The stalks grow from 5 to 6 feet high and have ears 8 to 10 inches long, filled with 8 rows of rich golden kernels. It will appeal to the critical market or home gardener who has been looking for a Bantam corn that will produce more to the acre and yet have golden bantam quality. **Pkt., 10c; ½ lb., 20c; lb., 35c; 2 lbs., 60c; 5 lbs., \$1.35; 10 lbs., \$2.40.**

EARLY EVERGREEN. Resembles Stowell's Evergreen in flavor, appearance and quality, but ripens ten days earlier, and remains in good condition as long as Stowell's. Ears measure about seven inches in length. **By mail, postpaid, pkt., 10c; ½ lb., 20c; lb., 30c; 2 lbs., 55c; 5 lbs., \$1.15; 10 lbs., \$2.00; 25 lbs., \$4.25.**

COUNTRY GENTLEMAN or SHOE PEG. Late variety. The ears are seven to nine inches long and the cob is small, densely covered to the very tip with irregular rows of very long, tender white kernels of delicious flavor when cooked. Stalks average seven feet in height and frequently yield 3 ears each. Claimed by many to be the best flavored Sweet Corn. **By mail, postpaid, pkt., 10c; ½ lb., 20c; lb., 30c; 2 lbs., 55c; 5 lbs., \$1.15; 10 lbs., \$2.00.**

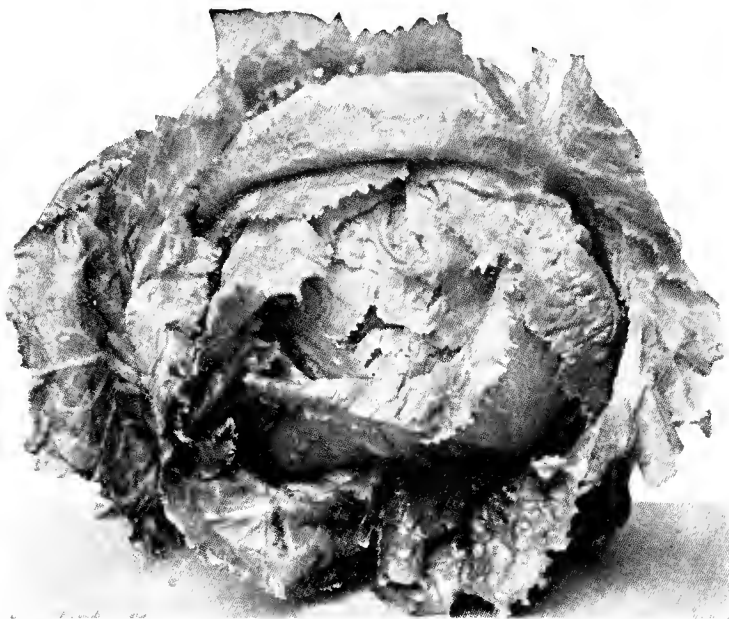
POP CORN

WHITE RICE. A very popular and prolific variety. Ears long, and produced abundantly. Kernels long and slender, resembling rice grains. Pops pure white, and used largely for commercial purposes. Tender and delicious when popped. **By mail, postpaid, pkt., 10c; ½ lb., 20c; lb., 30c; 2 lbs., 50c; 5 lbs., \$1.00.**

Wadsworth, Ohio, April 15, 1931.

P. L. Rohrer & Bro., The New Century beet is certainly fine. Always have had poor beets until Mrs. V. L. Boughler.

LETTUCE



Iceberg

ICEBERG—50 Days. White Seed. A curled heading, medium large, crisp green variety, edges fringed and tinged with brown, a sort having outer leaves of strong ribs, enclosing an exceeding crisp and white interior—crisp as ice. **By mail, postpaid, pkt., 5c; oz., 15c; ¼ lb., 40c; lb., \$1.25.**

NEW YORK or WONDERFUL—60 Days. White Seed. Possibly the most sought after Lettuce in the market today, certainly the most talked about. This crisp, hard Lettuce is served extensively on dining cars and in hotels and restaurants. It is a crisp, large heading variety, dark metallic green and slightly curled on the edges. Produces the most solid and compact head of any lettuce in the market. **By mail, postpaid, pkt., 10c; oz., 20c; ¼ lb., 60c; lb., \$2.00.**

BIG BOSTON. The most popular of head Lettuce, as it is good for early, midseason and fall use. The large compact heads are bright, light green, blanching to rich yellow at the heart and are deliciously sweet, tender and crisp. It is an exceptionally good variety for market as the heads are very solid with few outer leaves. **By mail, postpaid, pkt., 5c; oz., 15c; ¼ lb., 40c; lb., \$1.25.**

BLACK SEEDED SIMPSON. The broad light green leaves, crumpled and twisted, form a large firm bunch, which blanches well and is decidedly crisp. One of the best bunching varieties. Marketable early in the season. **By mail, postpaid, pkt., 5c; oz., 15c; ¼ lb., 35c; lb., \$1.15.**

GRAND RAPIDS. Fine variety for forcing under glass, but also good for outdoor planting. The crisp light green leaves form a loose, rounded cluster that matures early. A very good market sort as it ships well, retaining its crisp qualities much longer than any other variety. **By mail, postpaid, pkt., 5c; oz., 15c; ¼ lb., 35c; lb., \$1.15.**

MUSKMELONS

CULTURE. One ounce seed will sow about 80 hills. The Muskmelon demands a light sandy soil, and planting should not be done until ground is dry and warm. Sow 6 to 12 seeds on a hill, the hills to be 6 feet apart each way and covered one-half inch. When the plants have produced their rough leaves thin to three plants to hill.

EMERALD GEM. Considered by many to be one of the best salmon-fleshed melons. It is a small variety, with dark green skin and flesh that is sweet and delicious. The vines yield heavily, and the fruit always sells well on the markets. **By mail, postpaid, pkt., 5c; oz., 15c; ¼ lb., 35c; lb., \$1.10.**

ROCKY FORD. These melons are oval in shape and heavily netted, measuring about 5 inches in length. The smooth, light green flesh is delicious in flavor. A very good sort that has been on the market a long time and very popular with lovers of good melons. **By mail, postpaid, pkt., 5c; oz., 15c; ¼ lb., 35c; lb., \$1.10.**

TIP TOP. One of the most popular and productive melons, and good for extra early and late crops. The fruit is large, nearly round and moderately netted. The flesh is solid, sweet, juicy, of fine flavor and can be eaten to the very rind. One of the best all around melons. **By mail, postpaid, pkt., 5c; oz., 15c; ¼ lb., 35c; lb., \$1.10.**

HEARTS OF GOLD. A splendid mid-season variety. Larger than the Rocky Ford and more uniform. The rich golden flesh has the most excellent flavor and is very deep, having only a small seed cavity. Recommended for home or market gardens. If you have a good soil for melons it will pay you to grow a few acres. **By mail, postpaid, pkt., 5c; oz., 15c; ¼ lb., 35c; lb., \$1.10.**



Benders Surprise

BENDERS SURPRISE. Large size and deliciously sweet. Flesh is deep orange colored and very thick. Light green with coarse netting. When ripe melons turn golden yellow tint which gives fruit an attractive appearance. Will keep in good condition and improve in flavor for five or six days after picking. Ripens medium early. Profitable sort to grow for home use, market or shipping. **By mail, postpaid, pkt., 10c; oz., 15c; ¼ lb., 50c; lb., \$1.50.**

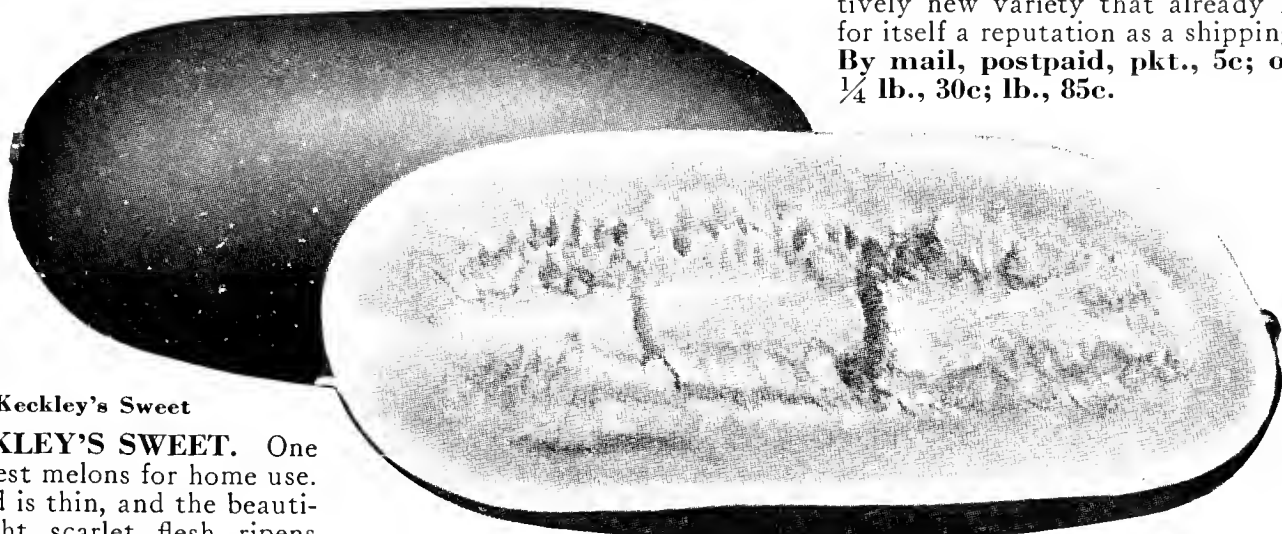
EXTRA EARLY HACKENSACK. A good variety where an early crop is desired, and has so many good qualities that it has become immensely popular. The melons are large, flat and well netted, and the flesh is thick green of excellent flavor. A good seller on the markets. **By mail, postpaid, pkt., 5c; oz., 15c; ¼ lb., 35c; lb., \$1.10.**

Ida Runkles of Mt. Airy, Md. writes us that she finds the New Century Beet very tender and fine for canning. Better order some for yourself. You'll like them, too.

WATERMELONS

CULTURE. One ounce will sow about 50 hills. Watermelons should have same cultivation as Muskmelons, but should be planted 8 to 10 feet apart.

COLE'S EARLY. An extra early variety that has a thin rind, beautiful bright red flesh, of fine texture and lusciously sweet. Melons are oval and of medium size. One of the best sorts for the home market. **By mail, postpaid, pkt., 5c; oz., 10c; 1/4 lb., 30c; lb., 85c.**



Keckley's Sweet

KECKLEY'S SWEET. One of the best melons for home use. The rind is thin, and the beautiful bright scarlet flesh ripens close to it. It is oblong in form and has glossy, dark green skin. The flesh is crispy and sugary without a sign of stringiness. The melons average 18 inches in length by 10 to 12 inches in diameter. **By mail, postpaid, pkt., 5c; oz., 10c; 1/4 lb., 30c; lb., 85c.**

ROUND LIGHT ICING. Fruits are medium sized, nearly round, greenish white, slightly veined or dotted with light green. The flesh is light red, sweet and crisp, seed white. Noted for its fine qualities and sells well in any market. **By mail, postpaid, pkt., 5c; oz., 10c; 1/4 lb., 30c; lb., 85c.**

TOM WATSON. One of the best shipping melons. The fruits measure 18 to 24 inches long and 10 to 14 inches in diameter, weighing as high as 50 pounds. The delicious deep red flesh extends close to the rind, which is dark green and very strong. A comparatively new variety that already has won for itself a reputation as a shipping melon. **By mail, postpaid, pkt., 5c; oz., 10c; 1/4 lb., 30c; lb., 85c.**

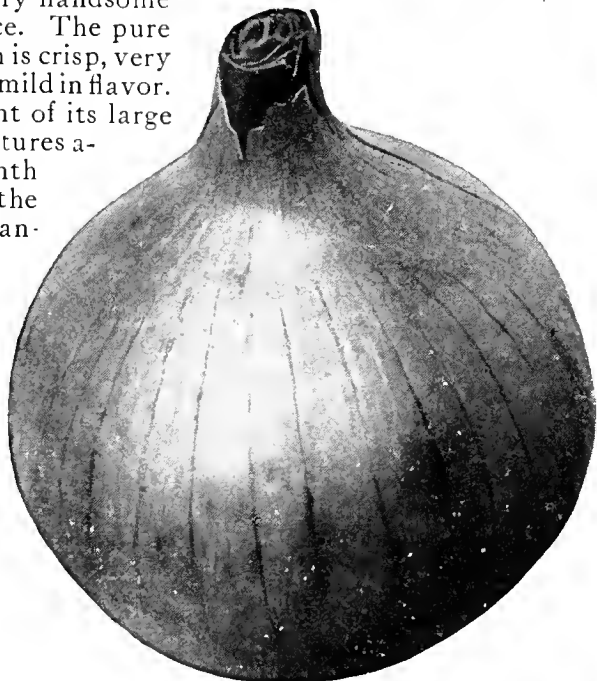
LONG LIGHT ICING. A long melon with skin very light green and sometimes reaches a weight of 40 to 50 pounds. The flesh is deep red and very finely grained. **By mail, postpaid, pkt., 5c; oz., 10c; 1/4 lb., 30c; lb., 85c.**

ONIONS

WHITE PORTUGAL or SILVERSKIN. The bulbs are large with silvery skin, and sweet, tender, white flesh, which is mild in flavor. Our strain of this variety cannot be excelled. **By mail, postpaid, pkt., 10c; oz., 25c; 1/4 lb., 70c; lb., \$2.25.**

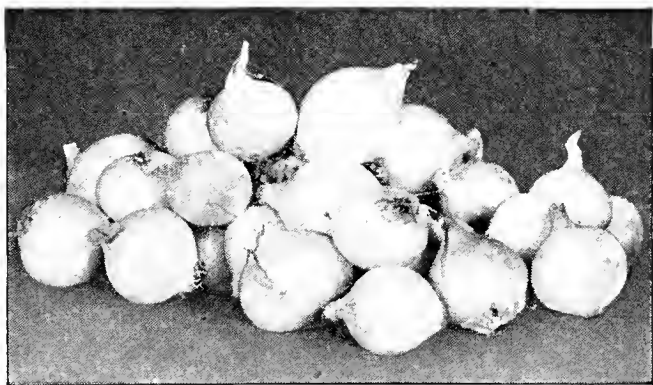
PRIZE TAKER. An enormous yellow Onion that is three times the size of the Yellow Globe Danvers, and sometimes weighs four pounds. The skin is thin and bright straw-yellow, giving the bulbs a very handsome appearance. The pure white flesh is crisp, very sweet and mild in flavor. On account of its large size it matures about a month later than the Globe Danvers.

There is no more profitable sort for home or market garden. **By mail, postpaid, pkt., 10c; oz., 20c; 1/4 lb., 60c; lb., \$2.00.**



Prize Taker

ONION SETS



YELLOW GLOBE DANVERS. White Portugal or Silver Skin. You need take no chances on ordering our High Grade Onion Sets. These sets are sure to please you and produce profitable results. **By mail, postpaid, qt., 25c.** For prices on larger quantities see price list.

YELLOW GLOBE DANVERS. The most popular of the yellow Onions for market and home use, as it is one of the heaviest croppers and best keeper. The bulbs are very large, globe shaped, with small necks and a brownish yellow skin. The flesh is white, fine grained and mild. It is an enormous yielder, a crop of 500 to 800 bushels to the acre not being unusual. **By mail, postpaid, pkt., 10c; oz., 20c; 1/4 lb., 60c; lb., \$2.00.**

WHITE PEARL. The best of all for small pickles and the earliest ripening onion. Bulbs are pure white, averaging 1 1/2 inches in diameter. **By mail, postpaid, pkt., 10c; oz., 20c; 1/4 lb., 70c; lb., \$2.25.**

New Holland, Pa., August 20, 1931

Dear Sirs:—

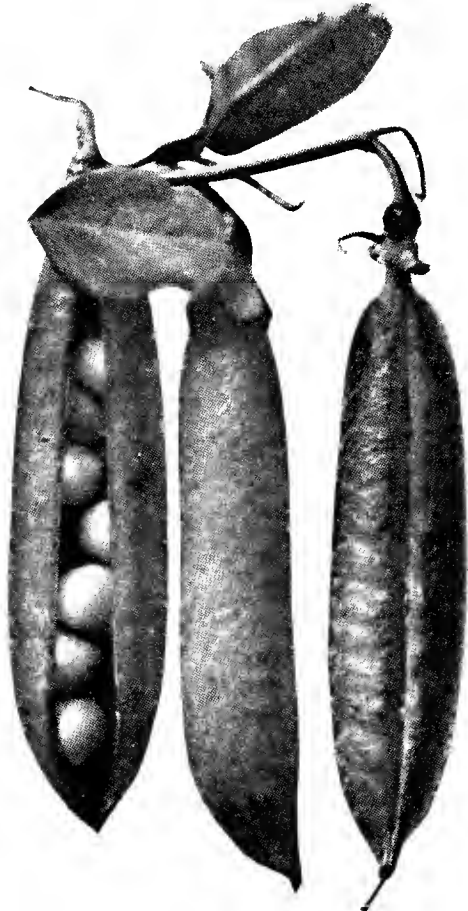
Sowed your seed last year and had beautiful pansies this spring.

Clyde G. Buckwalter.

PEAS

PETER PAN.

Very large podded dwarf pea. Vines short and yield abundantly. Peas dark green. Very profitable sort for either home or market garden. It pays to plant at least a portion of your crop with this variety. **By mail, postpaid, pkt., 10c; ½ lb., 20c; lb., 35c; 2 lbs., 65c; 5 lbs., \$1.40; 10 lbs., \$2.50.**



Peter Pan

LAXTONIAN.

Large podded dwarf variety similar to Gradus, though a little earlier. Extra large, deep green pods are always well filled. **By mail, postpaid, pkt., 10c; ½ lb., 20c; lb., 35c; 2 lbs., 65c; 5 lbs., \$1.40; 10 lbs., \$2.50.**

THOMAS LAXTON (Wrinkled). About four days later than Gradus. Peas are deeper, richer green, and are square at the end. **By mail, postpaid, pkt., 10c; ½ lb., 20c; lb., 35c; 2 lbs., 65c; 5 lbs., \$1.35; 10 lbs., \$2.25; 50 lbs. or more, 19c per lb.**

NOTT'S EXCELSIOR (Wrinkled). One of the most popular of the extra early varieties, especially with market gardeners. It is a close, compact grower with 3 inch pods tightly filled to the very end with large peas of exceptionally sweet flavor. **By mail, postpaid, pkt., 10c; ½ lb., 20c; lb., 35c; 2 lbs., 65c; 5 lbs., \$1.35; 10 lbs., \$2.25; 50 lbs. or more, 20c per lb.**

TELEPHONE. One of the most productive of the late wrinkled sorts. Vines very vigorous in growth, reaching a height of 3½ feet. Large pods containing 6 to 7 peas, closely packed, of light green color and delicious flavor. Fine variety for general crop. **By mail, postpaid, pkt., 10c; ½ lb., 20c; lb., 35c; 2 lbs., 65c; 5 lbs., \$1.40; 10 lbs., \$2.50; 50 lbs. or more, 20c per lb.**

EARLY BIRD PEAS. A very hardy, productive, early, large podded variety which can be planted very early in the Spring. Pods are about four inches long and contain seven to nine peas of good quality. Peas are almost smooth and will withstand cold wet weather. A superior quality for an early large podded pea. **By mail, postpaid, pkt., 10c; ½ lb., 20c; lb., 35c; 2 lbs., 65c; 5 lbs., \$1.40.**

LITTLE MARVEL (Wrinkled). Vines grow about 15 inches high with pods 2¾ to 3 inches in length. Matures in about 60 days. Pods are considerably larger than Nott's Excelsior, often produced in pairs. The seed is green and of medium size. Highly recommended variety for home garden. **By mail, postpaid, pkt., 10c; ½ lb., 20c; lb., 35c; 2 lbs., 65c; 5 lbs., \$1.35; 10 lbs., \$2.40; 50 lbs or more, 20c per lb.**

PRINCE EDWARD PEAS. Matures in about 80 days. Vines 4½ to 5½ feet tall. Large pods, 5 to 5½ inches long, containing 5 to 7 peas of the best dark podded telephone type, showy, exceedingly productive and in our opinion the best strain of Telephone on the market today for either home or market gardeners to grow. **Pkt., 10c; ½ lb., 20c; lb., 35c; 2 lbs., 65c; 5 lbs., \$1.35; 10 lbs., \$2.50.**

ALASKA. An extremely early, smooth, blue seeded variety that is very productive. The vines grow 20 to 24 inches high, bearing well filled, medium sized pods. Matures in about 55 days and can be planted 10 days before it is safe to put the tender wrinkled sorts in the ground. **By mail, postpaid, pkt., 10c; ½ lb., 20c; lb., 35c; 2 lbs., 60c; 5 lbs., \$1.20; 10 lbs., \$2.00; 50 lbs. or more, 19c per lb.**

FIRST AND BEST. A very early sort that is extremely popular for market and shipping. The pods are well filled with smooth peas, and usually mature at one time, so that the entire crop can be gathered in one picking. A good early variety. **By mail, postpaid, pkt., 10c; ½ lb., 20c; lb., 35c; 2 lbs., 65c; 5 lbs., \$1.10; 10 lbs., \$2.00; 50 lbs. or more, 18c per lb.**

A Real Special

Four varieties of Peas, the finest strains obtainable. Four packs for the price of three or 4—½ lb. packets for less than what 3 would cost.

Early Bird Thomas Laxton
Little Marvel Peter Pan

4 packs—(1 of each) . . . Only **30c**

4—½ lbs.—(1 of each) . . . Only **60c**

GRADUS or PROSPERITY. One of the best wrinkled sorts. Vines are vigorous and produce uniformly large pods 4 to 4½ inches long, nearly round and filled with large peas of delicious flavor. Matures in 55 days. **By mail, postpaid, pkt., 10c; ½ lb., 20c; lb., 35c; 2 lbs., 65c; 5 lbs., \$1.35; 10 lbs., \$2.50.**

SUGAR PEAS

MAMMOTH MELTING SUGAR. The largest, sweetest and most desirable of the Sugar Peas. Pods of this variety are so brittle that they snap without a string. Plants grow to a height of 5 feet and bear a profusion of large, broad pods. One of the best Sugar Peas. **By mail, postpaid, pkt., 10c; ½ lb., 25c; lb., 40c; 2 lbs., 75c; 5 lbs., \$1.75; 10 lbs., \$3.00.**

TALL LUSCIOUS SUGAR. This variety is unequalled for sweetness and tenderness. Pods are thick and fleshy at all stages of growth, and are 5 to 7 inches long, and 1 to 1½ inches wide. This variety grows 5 to 6 feet tall and branches freely if given proper support, producing abundantly for a long period. Blossoms are purple. **By mail, postpaid, pkt., 10c; ½ lb., 25c; lb., 40c; 2 lbs., 75c; 5 lbs., \$1.75; 10 lbs., \$3.00.**

DWARF SUGAR. Dwarf in habit of growth. Matures in 60 days. Small sized pods which are very tender, sweet and delicious. Blossoms white. **By mail, postpaid, pkt., 10c; ½ lb., 25c; lb., 40c; 2 lbs., 75c; 5 lbs., \$1.75; 10 lbs., \$3.00.**

Gentlemen:-

I like my seed that I purchased from you very much.—Mrs. S. H. Stever.

Freeport, Pa., Apr. 7, 1931

PARSNIPS

A standard variety. Roots arc of medium length, with a broad shoulder which gradually tapers downward. The skin is white, smooth and attractive. The flesh is sweet, fine grained and tender. Good for table use or stock feeding. **By mail, postpaid, pkt., 5c; oz., 10c; ¼ lb., 25c; lb., 80c.**

PARSLEY

MOSS CURLED. The best and most improved strain. Beautifully curled and crumpled. Best for garnishing and flavoring. If cut when about three inches high it starts a new growth that will be better curled and a brighter color. **By mail, postpaid, pkt., 5c; oz., 10c; ¼ lb., 25c; lb., 75c.**

PEPPERS

RUBY KING. A highly productive Red Pepper bearing fruit 4 to 6 inches long and 3 to 4 inches across at top, slightly tapering toward end. The flesh is mild and sweet, ideal sliced in mixed salads. Fine for stuffing with meats, rice, etc. **By mail, postpaid, pkt., 10c; oz., 40c; ¼ lb., \$1.10; lb., \$3.75.**



Chinese Giant

CHINESE GIANT. An enormous Pepper measuring 12 inches in circumference and four to five inches long. It is an early and prolific sort. Plants grow about two feet high and carry an enormous load of fruit, often having appearance of being bunched together. Flesh is thick, tender, mild and sweet. **By mail, postpaid, pkt., 10c; oz., 60c; ¼ lb., \$1.75; lb., \$6.00.**

OSHKOSH. Best Yellow Pepper. The flesh is very thick and is the sweetest pepper grown. The peppers, before matured, are of a deep green color, large, smooth and best shape for stuffing. The color is golden yellow when ripe. **By mail, postpaid, pkt., 10c; oz., 60c; ¼ lb., \$1.75; lb., \$6.00.**

HARRIS GIANT. The largest early pepper. Peppers are 4½ inches high and 3½ inches through. Flesh is deep green turning to brilliant red. The thick flesh has a very sweet and pleasant flavor. Produces large yield. Profitable sort to grow. **By mail, postpaid, pkt., 10c; oz., 50c; ¼ lb., \$1.25; lb., \$4.00.**

PUMPKINS

KING OF THE MAMMOTH. The popular exhibition Pumpkin that is usually the winner at the fairs. **By mail, postpaid, pkt., 5c; oz., 10c; ¼ lb., 30c; lb., \$1.00.**

SUGAR or PIE. One of the best pie Pumpkins. An excellent keeper. **By mail, postpaid, pkt., 5c; oz., 10c; ¼ lb., 30c; lb., 90c.**

CUSHAW or CROOKNECK. Yellow pumpkin. One of the widely popular varieties. Matures in 75 days. Flesh yellow, solid and sweet. **Packet, 5c; oz., 15c; ¼ lb., 40c; lb., \$1.10 postpaid.**

GREENSTRIPED CUSHAW. Flesh is rich yellow. Solid and fine grained, very thick and sweet. Excellent for pies. Keeps well. **Pkt., 5c; oz., 15c; ¼ lb., 40c; lb., \$1.10 postpaid.**

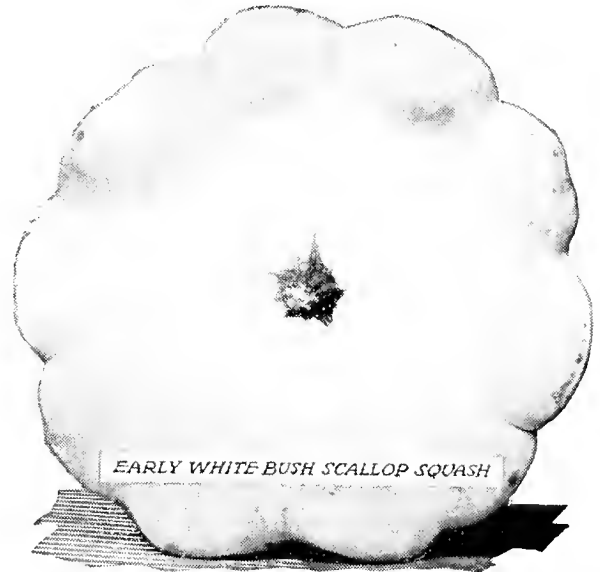
KOHL-RABI

WHITE VIENNA. Short leaved. Bulb light green. Very rapid in growth. **Pkt., 10c; oz., 25c; ¼ lb., 65c; lb., \$2.00, postpaid.**

SQUASH

Summer Varieties

SUMMER CROOKED NECK. An early variety with extra large fruits, often measuring 18 inches to 2 feet long. The flesh is of good quality and rich yellow in color. **By mail, postpaid, pkt., 5c; oz., 15c; ¼ lb., 40c; lb., \$1.25.**



EARLY WHITE BUSH SCALLOP SQUASH

EARLY WHITE SCALLOPED (Pettypan). A good shipping sort, which matures early. The flat scalloped fruits are creamy white in color, uniformly large and of good quality. **By mail, postpaid, pkt., 5c; oz., 15c; ¼ lb., 40c; lb., \$1.25.**

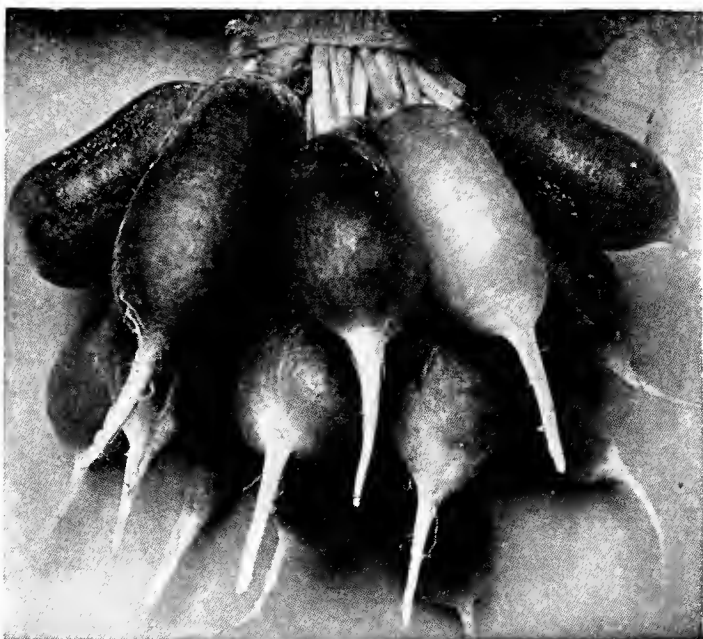
Fall and Winter Varieties

GOLDEN HUBBARD. Fine for home garden, being one-third to one-half smaller than the True Hubbard. The flesh is deep golden yellow, of fine flavor and cooks dry. **By mail, postpaid, pkt., 5c; oz., 15c; ¼ lb., 40c; lb., \$1.25.**

TRUE HUBBARD. A fine keeper and popular as a home and garden variety. The fruits are large, oval shaped, with dark green skin and very rich in flavor. An old standard sort that is planted extensively. **By mail, postpaid, pkt., 5c; oz., 15c; ¼ lb., 40c; lb., \$1.25.**

For only 20 or 30c. an acre, **STIMUGERM** will insure your stand of Clover, Alfalfa, Sweet Clover, Soy Beans, etc. See p. 11.

RADISHES



French Breakfast

FRENCH BREAKFAST. The ideal olive shaped radish. The color is bright red, tipped with white. Oblong in shape, is crisp and tender. A quick grower. Matures in 20 days. Exceedingly popular. **Pkt., 5c; oz., 10c; ¼ lb., 25c; lb., 90c postpaid.**

EARLY SCARLET TURNIP. No Radish is more popular for the home garden. A quick growing, round red radish with a small top. Rich red color, crisp and tender. Fine for early outdoor variety. **By mail, postpaid, pkt., 5c; oz., 10c; ¼ lb., 25c; lb., 90c.**

SCARLET GLOBE. One of the earliest radishes and one of the best for forcing. Very small top. Bright red in color, very attractive, both in color and shape. Mild, crisp, juicy and tender. **By mail, postpaid, pkt., 5c; oz., 10c; ¼ lb., 25c; lb., 90c.**

SCARLET TURNIP, WHITE TIPPED. Very popular market sort because of its attractive appearance. The Radishes are very deep scarlet in color with white tip. Flesh white and of fine quality. A great favorite for early planting outdoors. **By mail, postpaid, pkt., 5c; oz., 10c; ¼ lb., 25c; lb., 90c.**

CHARTIER LONG SCARLET. A beautiful long Radish of deep crimson, shading to white at tip. Splendid for outdoor culture. Stays tender. The flesh is white, crisp and well flavored. **By mail, postpaid, pkt., 5c; oz., 10c; ¼ lb., 25c.; lb., 90c.**

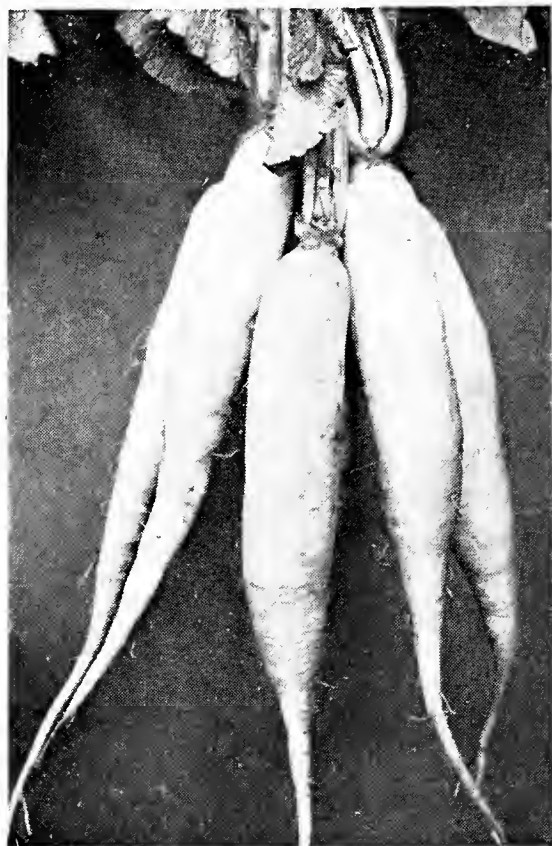
LONG WHITE VIENNA or LADY FINGER. Grows 6 to 7 inches in length. The skin and flesh are snow white, crisp and juicy. **By mail, postpaid, pkt., 5c; oz., 10c; ¼ lb., 25c.; lb., 90c.**

Winter

WHITE CHINESE. This variety grows to enormous size, 12 to 15 inches long with a diameter of 4 to 5 inches. The flesh is crisp, juicy and tender. Agreeably mild in flavor these roots are easily stored in boxes packed in sand and will keep all winter. **By mail, postpaid, pkt., 5c; oz., 10c; ¼ lb., 25c; lb., 90c.**

CHINESE ROSE or SCARLET CHINA. Medium size, 4 to 5 inches long. Skin deep rose. Flesh white, firm and compact. Not hard or stringy. **By mail, postpaid, pkt., 5c; oz., 10c; ¼ lb., 25c.; lb., 90c.**

ROUND BLACK SPANISH. Roots are round, skin is black and the flesh pure white. Easily grown and heavy yielder. The flesh is extremely firm and the roots keep in perfect condition all winter long if stored in slightly damp sand or soil and placed in a cool but frost proof cellar. **By mail, postpaid, pkt., 5c; oz., 10c; ¼ lb., 25c; lb., 90c.**



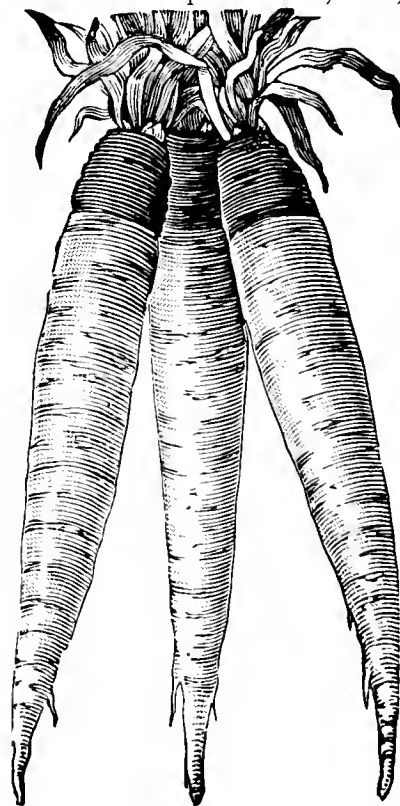
Icicle

ICICLE. The finest early, pure white, long radish. On good soil they are ready in 20 to 25 days, and will remain crisp and tender longer than any first early variety. **By mail, postpaid, pkt., 5c; oz., 10c; ¼ lb., 25c; lb., 90c.**

WHITE STRASBURG. An excellent summer Radish which stands severe heat and grows quickly. Long and tapering, with skin and flesh pure white, firm, crisp and tender. Can be pulled five weeks after sowing, but may be allowed to grow, retaining its crispness even when the roots are old and large. **By mail, postpaid, pkt., 5c; oz., 10c; ¼ lb., 25c; lb., 90c.**

SALSIFY
MAMMOTH SANDWICH ISLAND.

A tender, delicious variety that is far superior to other sorts. The roots are larger and thicker. Very mild and delicately flavored. This variety is planted very largely by market gardeners and should find a place in every home garden. **By mail, postpaid, pkt., 5c; oz., 25c; ¼ lb., 65c; lb., \$2.00.**





BREAK O' DAY. Best and earliest. The fruit is round, smooth and deep orange red in color. The flesh is very thick and solid with few seeds. Highest quality for early canning, table use, or market. Vines are hardy and produce large yields. **By mail, postpaid, pkt., 10c; oz., 50c; ¼ lb., \$1.50; lb., \$5.50.**

EARLIANA. A real early Tomato, one that will make fruits of good size, solid and good quality. The flesh is solid and has few seeds. **By mail, postpaid, pkt., 5c; oz., 30c; ¼ lb., \$1.00; lb., \$3.50.**

CHALKS EARLY JEWEL. Bright scarlet, extra early in maturing, coming in very shortly after Earliana, but is a heavier cropper, with fruits of larger size and sweeter flavor. **By mail, postpaid, pkt., 5c; oz., 30c; ¼ lb., \$1.00; lb., \$3.50.**

RUTA-BAGA

AMERICAN PURPLE TOP. Grows very large in size but remains solid and is fine grained. Roots are purple at top and oblong in shape with short tap root. The flesh is deep yellow, mild and sweet. Fine for table use or stock feeding. This is a very large yielder and keeps well. **By mail, postpaid, pkt., 5c; oz., 10c; ¼ lb., 25c; lb., 65c.**

SPINACH

BLOOMSDALE (*Savoy Leaved*). This variety has wrinkled leaves. It is the hardiest variety and very prolific. The thick fleshy leaves are crumpled and very delicious. **By mail, postpaid, pkt., 5c; oz., 10c; ¼ lb., 15c; lb., 40c; 10 lbs., \$3.00.**

KING OF DENMARK SPINACH. A new variety that is far superior to all other varieties. It will stand from ten days to two weeks longer before running to seed than any other variety. This is a great advantage over the other varieties for both the home garden and the commercial grower. Large thick dark green leaves. **By mail, postpaid, pkt., 5c; oz., 10c; ¼ lb., 20c; lb., 45c; 10 lbs. \$3.50.**

SWISS CHARD

GIANT LUCULLUS. Stalks grow tall with broad, thick, fleshy, crumpled leaves, which are delicious. A fine vegetable that requires little attention and will furnish crop from July until frost. Very tasty when cooked in same manner as Spinach. **By mail, postpaid, pkt., 5c; oz., 10c; ¼ lb., 25c; lb., 90c.**

Frosts, biting winds, insects and other unfavorable conditions have no effect on your vine crops if you use HOT-KAPS. See p. 28.

TOMATOES

JOHN BAER. The introducer claims that this is one of the very earliest Tomatoes. In addition to its earliness it is an enormous yielder. The fruits are perfect in shape, solid, high crowned and of a brilliant red. **By mail, postpaid, pkt., 5c; oz., 30c; ¼ lb., \$1.15; lb., \$3.75.**

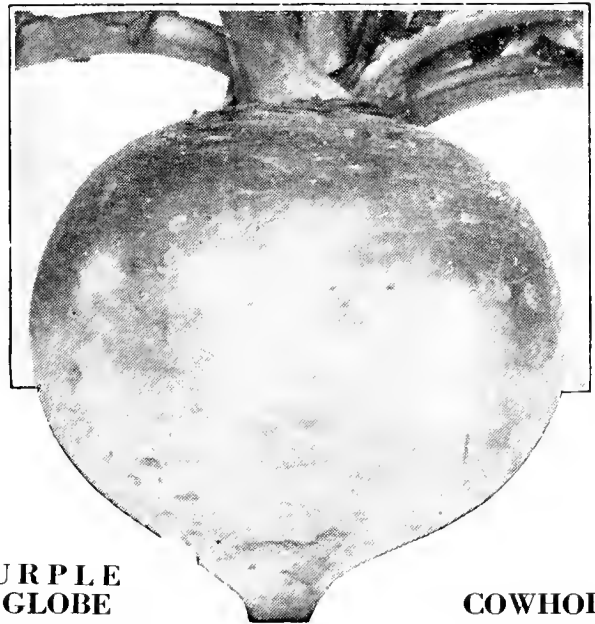
STONE. One of the best main crop red Tomatoes. The fruits are large, smooth, bright scarlet, of fine quality and has a small core. A heavy yielder of uniformly large fruits, and has proved to be a tremendous money maker wherever used. Fine for canning or home garden, and long considered the standard main crop Tomato for all purposes. **By mail, postpaid, pkt., 5c; oz., 30c; ¼ lb., 80c; lb., \$2.50.**

PONDEROSA or BEEFSTEAK. The largest tomato yet introduced, frequently weighing a pound or more. The fruit is deep purple in color, slightly reddish with very solid, luscious flesh and small seed cells. Fine for family garden and market. This sort is very fleshy which makes it a good slicing Tomato. **By mail, postpaid, pkt., 10c; oz., 50c; ¼ lb., \$1.50; lb., \$5.50.**

MAR-GLOBE. A splendid new variety developed by the U. S. Dept. of Agriculture. Produces large smooth globe shaped, deep scarlet fruit that ripens evenly and does not crack. The flesh is very fine quality. Highly productive. **By mail, postpaid, pkt., 10c; oz., 50c; ¼ lb., \$1.50; lb., \$5.50.**

BONNY BEST. A vigorous growing sort of spreading, upright habit, with large, smooth, deep green foliage. The fruits are of good size and borne in clusters of three to five. Rather flat, but smooth and do not crack. **By mail, postpaid, pkt., 5c; oz., 30c; ¼ lb., \$1.00; lb., \$3.50.**

TURNIPS

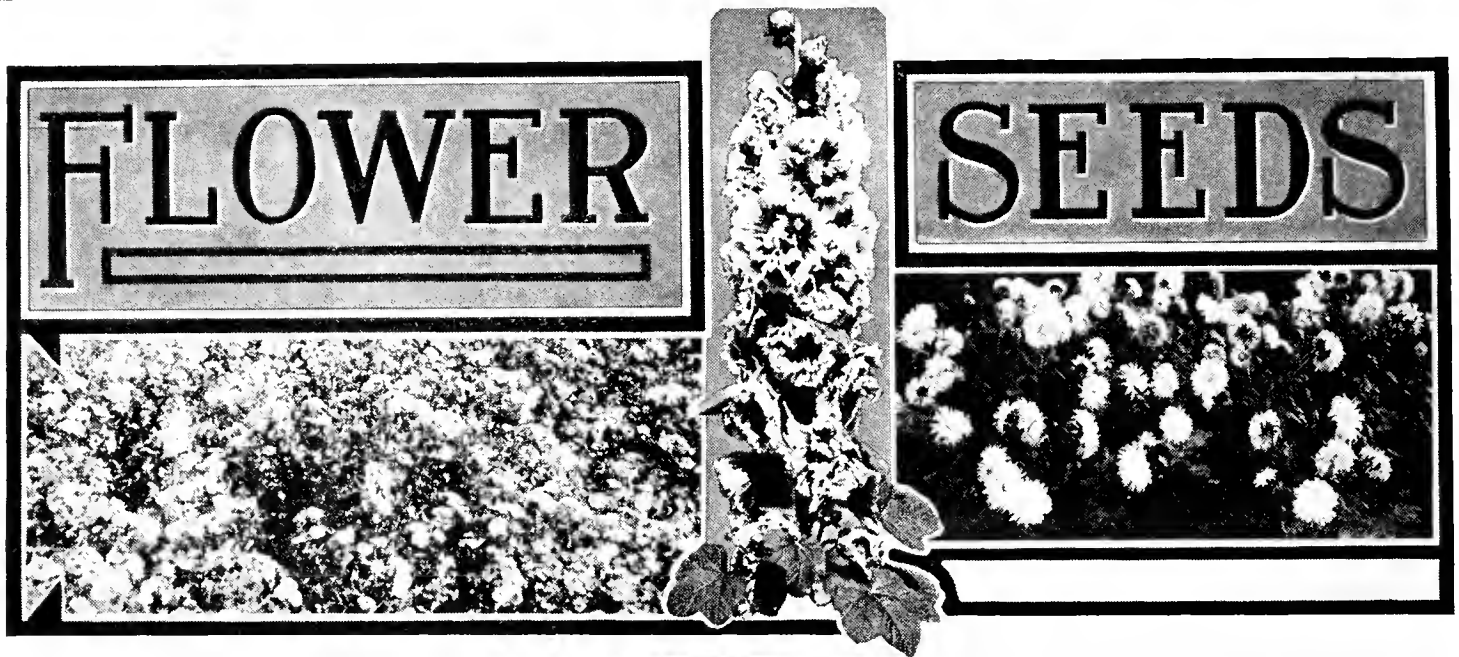


PURPLE TOP GLOBE

Keeps well and fine for table use. Turnips measure 6 inches and more in diameter. They are clear creamy white below the rich purplish red above. The flesh is white and firm, crisp, and of mild flavor. Used extensively for stock use. **By mail, postpaid, pkt., 5c; oz., 10c; ¼ lb., 20c; lb., 55c.**

COWHORN

Long white, mainly used for stock feeding, but excellent for table use. It is a rapid grower and is fine for turning under with Crimson Clover as a green manure crop. The roots are large, long, carrot like shape, and grow partly above the ground. **By mail, postpaid, pkt., 5c; oz., 10c; ¼ lb., 20c; lb., 50c.**



ASTERS

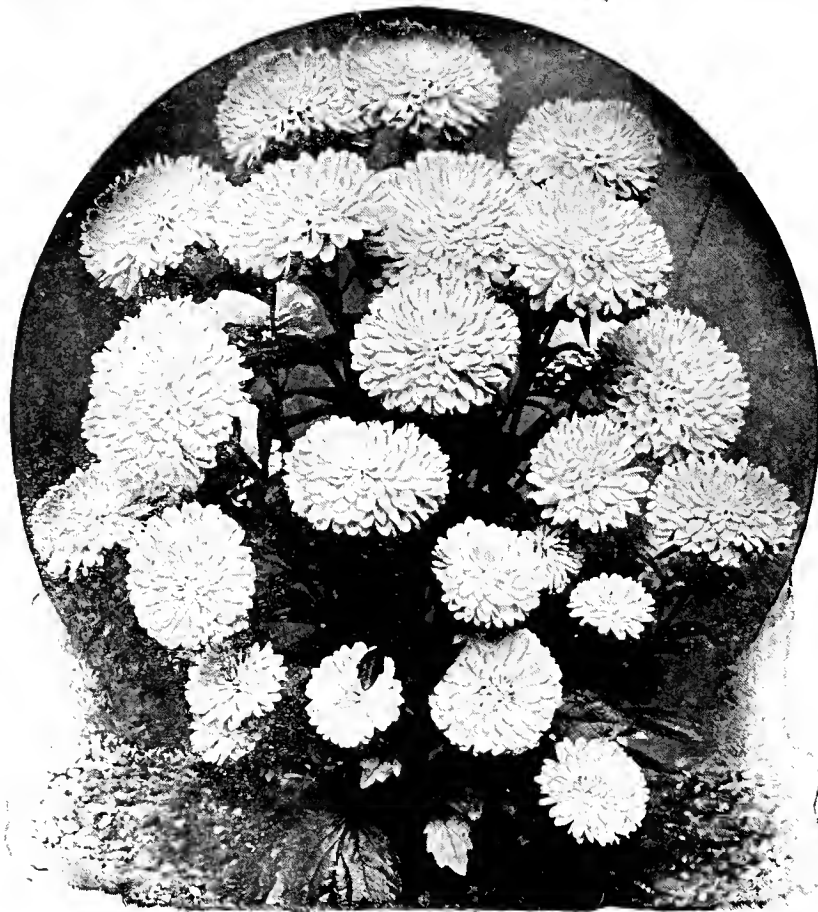
CULTURE. Seed may be sown outdoors as early as possible after ground is warm and dry, or for earlier blooming seed may be sown indoors or in cold frames and transplanted in the open ground after danger of frost is over. Sow seed about one-half inch deep, with soil firmly pressed down. Rows about 18 inches apart. We do not recommend sowing Asters in the same ground two years in succession.

ROHRER'S LATE BRANCHING.

A very strong growing Aster usually not coming into bloom until the latter part of August, but producing on very long stems, full petalled, exceptionally large and deep double blossoms of fine form. The petals are long, rather broad, and the blooms stand shipment well. The plants are branching in habit of growth and are about two feet high. **By mail, postpaid, pkt., 10c; ¼ oz., 25c; oz., 90c; ¼ lb., \$2.25; lb., \$8.00.**

ANTIRRHINUM (SNAPDRAGON)

New Giant Flowered Snapdragon. Antirrhinums in recent years have become very popular and are now one of our very best flowers. No other flower has such a wide range of colors. Whether planted for garden or cut flowers we know of few flowers as desirable. For blooms the first season sow the seed very early indoors, or under glass, and transplant as soon as the ground is warm and dry, setting plants about ten inches apart, and giving them plenty water. If the plants are set out in May they will bloom in June and July, and continue until late in the fall. Seed sown in the open ground in the early spring will produce plants that flower in August. **By mail, postpaid, pkt., 10c; ¼ oz., 25c; oz., 75c.**



Queen of the Market Aster

QUEEN OF THE MARKET. This variety is very desirable and productive. Our mixture contains all colors of the best and most desirable sorts. Two weeks earlier than any other variety. The plants are of a branching habit, spreading 16 to 18 inches high, bearing on long stems from 10 to 15 finely formed, double blooms. A profitable variety to grow for early market or for home garden. **By mail, postpaid, mixed colors, pkt., 10c; ¼ oz., 25c; oz., 90c; ¼ lb., \$2.25; lb., \$8.00.**



For a really handsome border or flower bed, use Rohrer's Larkspur. So easily grown.

AGERATUM (FLOSS FLOWER)

For beds and borders this is one of the finest of all low growing plants, as it is literally covered with blooms from early summer until frost. Unlike any other plants the rain does not spoil the flowers, nor the sun fade out their color. Easily raised from seed, which is usually started in a window, or hot bed, and transplanted outside in May. The seed can be sown outdoors in May. **By mail, postpaid, pkt., 10c; ¼ oz., 15c; oz., 40c.**

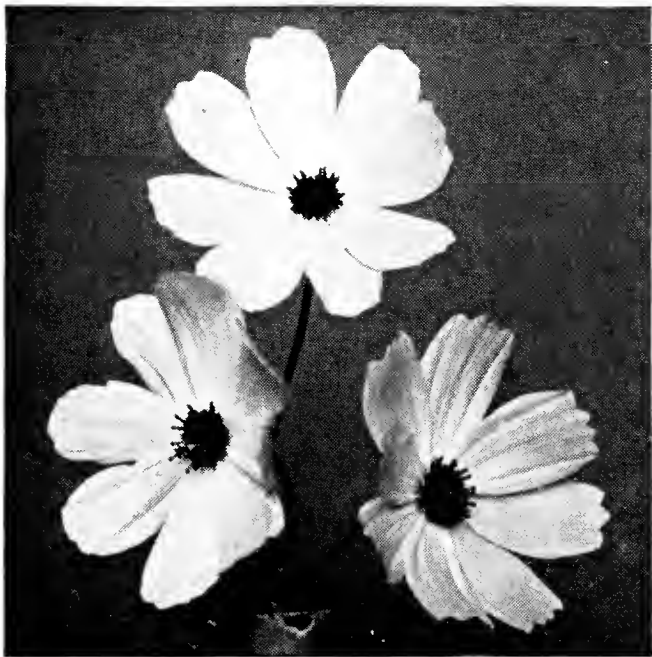
DIANTHUS (PINKS)

The great variety of brilliant colors and the profusion of blooms has made these garden pinks one of the most popular flowers. The plants grow about one foot high, and are particularly fine when planted in masses in beds and borders. Sow the seed outdoors in the early Spring and in a few weeks the plants will be up and in full bloom. If plants are too thick thin out to about six inches apart, when plants are two inches high.

ROHRER'S SPECIAL MIXTURE. Double. This mixture contains all the various kinds of double blooms, and will supply a wonderful array of blooms in the garden all summer long. **By mail, postpaid, pkt., 10c; ¼ oz., 30c; oz., 90c.**

MIXED COLORS, SINGLE BLOOMS. **By mail, postpaid, pkt., 10c; ¼ oz., 20c; oz., 50c.**

COSMOS



EARLY FLOWERING GIANT COSMOS. These are among the most popular and early grown annual flowers, making a wonderful display in beds and borders in the garden, and furnishing an abundance of cut blooms for the house decoration in the fall when other flowers are scarce. Sow the seed outdoors just as soon as danger of frost is over. Also may be started in cold frames and transplanted. Cosmos thrive in any good soil. Transplant about eighteen inches apart. **By mail, postpaid, pkt., 10c; oz., 40c.**

MIGNONETTE

A well-known, sweet scented garden favorite that everybody should grow. By sowing seed in April and again in July you can have a succession of blooms until frost. No garden is complete without Mignonette, the fragrance of which makes it indispensable for bouquets.

LARGE FLOWERING. Sweet scented, all sorts, finest mixed. **By mail, postpaid, pkt., 10c; oz., 25c.**

DELPHINIUM (HARDY LARKSPUR)



Delphinium or Hardy Larkspur

These are the most popular of all hardy plants for the garden. The tall spikes of lovely flowers standing erect above the dark green foliage make a wonderful display. They begin to bloom in June. They are noted for their great variety of height. A good deep soil means larger and better flowers. Seed may be sown in the open ground from April until August, but it is not likely to flower until the next year. Prize Mixture. **By mail, postpaid, pkt., 10c; ¼ oz., 30c; oz., \$1.00.**

LARKSPUR



Hardy annual. They begin blooming in July and continue until frost. They make handsome beds and borders, and look extremely well in clumps of shrubbery. Few people realize how easy it is to grow these beautiful flowers, and how very attractive they are in the garden as cut flowers. The tall stock flowered varieties grow two to three feet high with spikes of large double flowers, over a foot long, in many shades of colors.

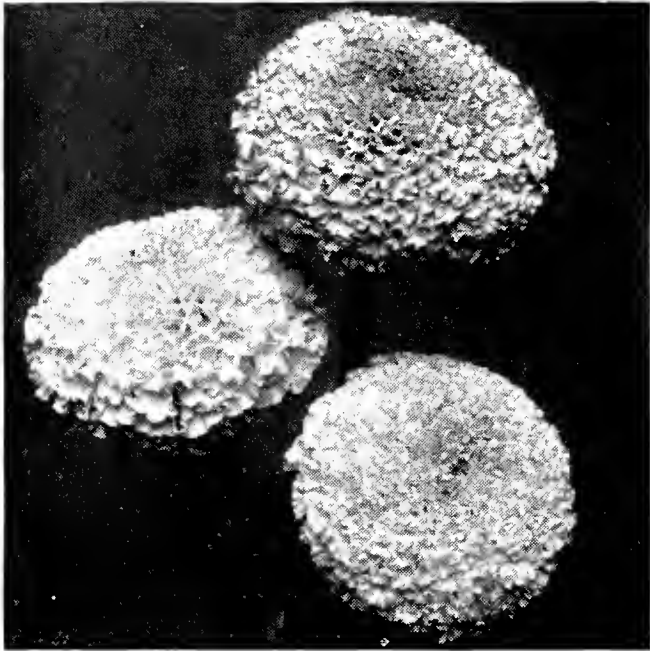
DOUBLE TALL STOCK FLOWERED. Mixed Colors. **By mail, postpaid, pkt., 10c; ½ oz., 30c; oz., 50c.**

NASTURTIUM

ROHRER'S MIXED, TALL SORTS. A combination of many tall varieties. Colors white, cardinal, orange, rose, scarlet, etc. **By mail, postpaid, pkt., 5c; oz., 10c; ¼ lb., 30c; lb., 90c.**

ROHRER'S MIXED, DWARF SORTS. These are adapted for beds and borders. Grow 8 to 15 inches high. A mixture of best sorts, producing when in bloom, an agreeable effect in colors of scarlet, crimson, bronze, gold and white. **By mail, postpaid, pkt., 5c; oz., 10c; ¼ lb., 30c; lb., \$1.00.**

Don't overlook our "Price Special" on the inside front cover. You can save a tidy sum on your order.

MARIGOLD

The African and French Marigolds are old favorites. A free flowering annual easy to culture. Both are extremely effective. The African has uniformly large, yellow and orange colored flowers and are well adapted for large beds or mixed borders. The French are dwarf in growth with beautifully striped flowers and are better suited for bedding purposes. Good blooms are successfully obtained from seed sown in the open ground after danger of frost is past.

AFRICAN. Tall double mixed. By mail, postpaid, pkt., 10c; ½ oz., 30c; oz., 50c.

FRENCH. Dwarf double mixed. By mail, postpaid, pkt., 10c; ½ oz., 30c; oz., 50c.

**SALVIA (SCARLET SAGE)**

BON-FIRE. The brilliant red flowers of this popular annual borne on long stately spikes, standing well above the foliage and blooming until frost, give this plant a prominent place in every garden. Seed should be started under glass or in boxes in February and March, and transplanted after danger of frost is past. A compact growing early flowering Salvia, two feet high, covered with long spikes of brilliant flowers. By mail, postpaid, pkt., 10c; ¼ oz., 50c; oz., \$1.50.

EVERGREEN, non-poisonous insecticide will protect your flowers by killing all insects. See page 28.

PETUNIA

Few annual plants equal in effectiveness the Petunia for growing in beds and borders, or in window and porch boxes. They commence flowering early and continue a sheet of blooms until frost. Plant the seed, which is exceedingly fine, in a warm sunny place. Any good garden soil well pulverized and in good condition may be used. Cover the seed with about one-eighth of an inch of soil firmly pressed down. Re-seeds itself when once planted.

HYBRIDA. Striped and blotched. Includes striped and blotched flowers in a wide range of brilliant colors. A very satisfactory mixture. By mail, postpaid, pkt., 10c; ¼ oz., 25c; oz., 75c.

HYBRID DWARF MIXED. Plants compact growing. A very choice mixture of many shades and colors. By mail, postpaid, pkt., 10c; ¼ oz., 35c; oz., \$1.25.

PHLOX (DRUMMONDI)

Unequaled as a magnificent display of many and brilliantly colored flowers. They are very easily cultured and bloom profusely through a long season. Useful as window-garden plants and very desirable for combining in mixed bouquets.

Seed is usually sown early in the Spring outdoors. A sunny location is desirable. Well pulverized and rich mellow soil should be used, and the seed, which germinates very slowly, covered with one-fourth inch of fine soil firmly pressed down. Our mixture is unexcelled for profusion of blooms and wide range of brilliant colors. By mail, postpaid, pkt., 10c; ¼ oz., 20c; oz., 75c.

PANSY

ROHRER'S MAMMOTH PANSY MIXTURE. Without doubt one of the grandest mixtures ever offered. It is imported by us direct from most noted Pansy grower in Europe, and covers a wide range of colors. The plants distinguish themselves by their robust growth, and form compact bushes of round shape, with strikingly large, healthy looking foliage. The individual petals are exceedingly broad and cover each other in such a manner as to make the flowers almost double; the beauty, brilliancy, and richness of color being the most striking. The more flowers you remove, the more and larger the blooms become. By mail, postpaid, pkt., 20c; ¼ oz., \$1.25; ½ oz., \$2.25; oz., \$4.00.

SCABIOSA (MOURNING BRIDE)

This annual deserves a space in your garden. It is very easily and quickly grown. Blossoms very freely during summer and fall and is one of the finest of all cut flowers for the house.

GIANT FLOWERING MIXTURE. A special strain of tall double varieties. A very choice mixture. By mail, postpaid, pkt., 10c; ¼ oz., 15c; oz., 50c.

SWEET WILLIAM

A well known attractive free flowering hardy plant bearing in the early summer flowers of rich and varied colors that make a splendid show in beds and borders.

Double mixed. Double flowers in a splendid mixture of colors. By mail, postpaid, pkt., 10c; ¼ oz., 20c; oz., 60c.

SWEET PEAS



Spencer Type

CULTURE. One ounce of seed will plant a row 25 feet long. To get good Sweet Peas the seed should be sown as soon as possible. The best soil is one containing some clay. The land should be made rich with manure or fertilizer. The vines should be watered in dry weather.

ROHRER'S FANCY MIXED. A mixture of the best blend of Sweet Peas in cultivation. All choice giant-flowering varieties of every color and type. A good mixture at a low price. By mail, postpaid, pkt., 5c; oz., 15c; ¼ lb., 40c; lb., \$1.25.

Inoculate your Sweet Peas with Stimugerm. Garden Size, postpaid, 25c.

ROHRER'S MIXED SPENCERS. The newest introduction in Sweet Peas. The flower stems are 10 to 12 inches long, very strong, and usually bear four blooms. This mixture is far superior to the ordinary mixture and includes many of the best Spencer varieties. By mail, postpaid, pkt., 10c; oz., 20c; ¼ lb., 50c; lb., \$1.75.

ZINNIA (YOUTH AND OLD AGE)

The Zinnia is easily grown and begins to bloom early in the summer and continues until frost. Sow the seed early in the Spring in the open ground in rich soil covering



Zinnia or Youth and Old Age

ing about one-fourth inch. When the plants are young thin to six inches apart. It is best to sow the seed where they are to flower.

DAHLIA FLOWERING MIXED. A new Zinnia that bears mammoth flowers similar to the Dahlia. This type is especially good as a cut flower. A splendid combination of brilliant colors. By mail, postpaid, pkt., 10c; ¼ oz., 30c; oz., \$1.00.

VERBENIA



Verbena

For a brilliant display in the garden or beds, these Mammoth Flowering Verbenias with their giant heads of showy flowers that are in bloom from July until frost cannot be surpassed. For very early flowers start the seed indoors and transplant. Seed sown outdoors in May will make blooming plants in July.

MAMMOTH. Extra large flowered. A fine mixture. Cultivated from select plants. By mail, postpaid, pkt., 10c; ¼ oz., 25c; oz., 75c.

SWEET ALYSSUM

LITTLE GEM. A beautiful white sort for edging, borders, and rock work. The plants grow about six inches high, produce hundreds of flowers and form a compact mass of blooms usually fifteen to eighteen inches across. Hardy Annual. By mail, postpaid, pkt., 10c; ¼ oz., 15c; oz., 40c.

For the most luscious of beets order the "New Century." As sweet and tender next spring as the day you dig them. Order a quantity.



Earlier to Market for higher prices

Germaco HOTKAPS—"individual hot-houses for every plant"—are made of waxed paper in the form of a cone which completely covers the plants—the **only way to fully protect** them from frost. HOTKAPS also protect against rain, wind, ground-crusting and insects—your assurance of faster-growing, hardier plants, with larger yields and greater profits, because you market earlier.

HOTKAPS are inexpensive to use. One man can "set" over 3000 of them per day.

Write us now about this money-making crop necessity, or simply order your season's supply now.

Prices: 1,000 lots, \$11.50; 5,000 lots, \$11.00 M; 10,000 lots, \$10.75 per M; 250 Trial Package, including Garden Setter with Tamper, \$4.00; 100 Home Package, including Garden Setter with Tamper, \$2.50; Germaco Hotkap Steel Setter with Tamper, \$2.50; postage extra.

Weights: 1,000 package HOTKAPS, 26 lbs.; 250 package, 9 lbs.; 100 package, 5 lbs.; Steel Hotkap Setter, 3 lbs.



Germaco
Hotkaps



EVER GREEN KILLS GARDEN INSECTS

EVER GREEN is absolutely nonpoisonous and kills practically all garden insects, including the Japanese beetle. Easy to get, easy to use and being nonpoisonous can be mailed.

PRICES POSTPAID

- 1 oz. bottles \$0.35
- 6 oz. bottles 1.00
- 16 oz. bottles 2.00
- 32 oz. cans 3.50
- 1 gallon cans 13.00
- 5 gallon cans 50.00

Use **EVER GREEN** to
NON-POISONOUS INSECTICIDE
PROTECT YOUR GARDEN

A NEW, SAFE SPRAY for Healthier Gardens

FOR FLOWERS, VEGETABLES, VINES, SHRUBS

Non-poisonous Spray Kills Insects

Now your plants can be assured of positive protection against insects. Sheps Plant Spray controls and kills both sucking and chewing insects, including Aphids, Thrips, Green Flies, Mealy Bugs, Worms, Caterpillars and others.

NON-POISONOUS for humans, birds, animals and plants. Sure death to insects. Will not injure the most delicate blooms or plants. Benefits soil and foliage.

The easiest spray to mix. Sheps Plant Spray is poured into water,—stirred for 15 seconds,—then poured into sprayer adding the required amount of water. 20 seconds from bottle to plant. No tedious and time-taking mixing—no soap solution. Spraying directions on each bottle.

Following sizes and prices:

- 2 oz. bottle, postpaid... ..35c
- 8 oz. bottle, postpaid.....75c
- 16 oz. bottle, postpaid.....\$1.25
- Quart can, postpaid..... 2.00
- Gallon can, postpaid..... 6.35
- 5 gallon can, postpaid.....30.00

Bulk Prices on Inquiry.

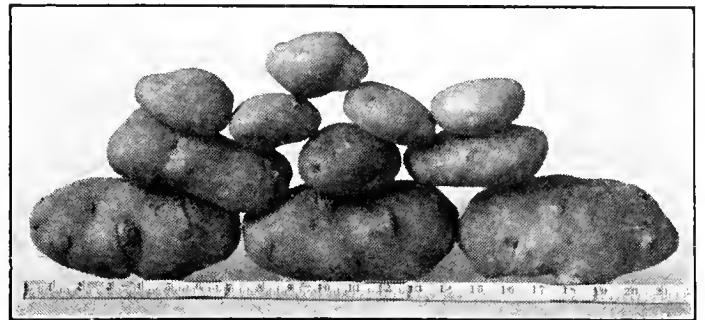
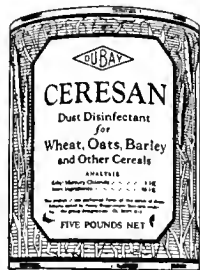


PROTECT YOUR GRAIN PROFITS INCREASE YOUR CROP YIELDS WITH CERESAN

Why lose part of your grain crops through smuts and other seed-borne diseases? Prevent these diseases and protect your profits by treating all seed grains with Ceresan before sowing. Effective in controlling odious smut and seed-borne flag smut of wheat; seedling blight of cereals caused by seed-borne scab; smuts of oats; covered smut and stripe of barley; kernel smuts of sorghums and millets; and seed-borne stem smut of rye. Seed may be treated in spare time. Ceresan is harmless to seed and does not injure grain drills. Use 2 oz. per bushel of seed wheat, rye, sorghums or millets; 3 oz. for oats and barley.

The only seed treatment you need for
Wheat
Oats
Barley
Rye
Sorghums
Millet

1 lb. . . . \$ 0.75
5 lbs. . . . 3.00
25 lbs. . . . 12.50



These fine potatoes were dug from a single hill of SEMESAN BEL-treated seed

DISEASE-FREE POTATOES



Semesan Bel, prepared especially for the seed disinfection of white and sweet potatoes, in addition to its advantages of

dust application, is the only disinfectant which can be applied as an *instantaneous dip*. Semesan Bel instantaneous dip is sweeping the country and rapidly displacing the formaldehyde and bichloride treatments.

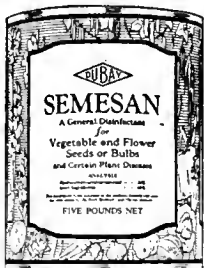
Semesan Bel, by controlling diseases which sap the vitality of seed potatoes, gives the seeds a chance to germinate quickly, producing sprouts of healthy vigor from which grow increased yields of clean, healthy plants and tubers. **Prices: 4 oz., 50c.; 1 lb., \$1.75; 5 lbs., \$8.00; 25 lbs., \$31.25; 100 lbs., \$120.00.**

1 lb. will Treat 70 Bushels

Send for FREE Potato Booklet



DISEASE PROTECTION FOR ¼c TO 1c PER POUND OF SEED



Makes Seeds Healthy

Semesan is the answer to the disease problems of flower growers. The grower of the asters illustrated above reports that Semesan seed treatment, by controlling wilt, produced his first successful crop in five years.

Semesan is easily applied in *either dust or liquid form*. No special skill or equipment required. Increases germination and produces larger yields of finer flowers at a cost of from only ¼c to 1c per pound of seed. Ask for Semesan Flower Booklet.

PRICES FOR SEMESAN

2 oz. \$ 0.50
8 oz. 1.60
1 lb. 2.75
5 lbs. 13.00
25 lbs. 56.25
100 lbs. 220.00

Make This Your Increase



By Treating Seed Corn With

SEMESAN JR.—For Seed, Field and Sweet Corn

Our corn crop is reduced over 80 million bushels annually by diseases that are carried on the seed. Destroy these costly diseases by treating your seed corn with Semesan Jr. Simple, quick, effective. Costs only 2½c an acre. Harmless to seed, does not slow up the rate of drop. Semesan Jr., destroys harmful disease organisms on the seed, protects seed from rotting in cold wet soil, makes earlier planting possible, controls seedling blight, reduces root and stalk rots and generally increases crop yields. Use 2 oz. per bushel of seed. **4 oz., 50c.; 1 lb., \$1.75; 5 lbs., \$8.00; 25 lbs., \$31.25.**



PRICES

4 oz. tin \$ 0.50
1 lb. tin 1.75
5 lb. tin 8.00
25 lb. pail 31.25



Ask for Free Booklet

**PROTECT YOUR CROPS
STIMULATE THEIR GROWTH
SPRAY WITH**

Pyrox
REG. U. S. PAT. OFF.
TRADE MARK REGISTERED

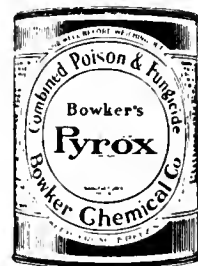
FIGHT BUGS AND BLIGHT WITH PYROX

PYROX is the powerful spray which kills chewing insects, prevents fungous diseases and stimulates foliage. It is a perfect mixture. Easy to prepare, sprays through the finest nozzle, stays on the hardest rain.

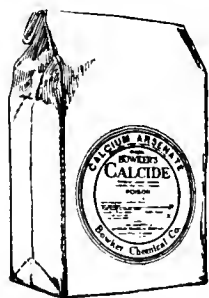
Farmers have found it pays to give up spraying with home made Bordeaux. Instead they use Pyrox. It not only saves time and trouble but it coats the plant like paint, while home made Bordeaux leaves room between drops for the insects or disease to attack the plant. This is because Pyrox is made of perfect ingredients that go into complete suspension, will pass through the smallest nozzle. It will not clog and the pressure will force it out, not in large drops, but in a fine mist that completely covers the leaves. We recommend that you protect your farm crops with Pyrox.

Pyrox wastes no time and labor. Simply mix with water according to directions and within five minutes you are ready to spray. One pound of Pyrox makes 5 or 6 gallons of spray. Prices: **Lb., 50c.; 5 lbs., \$1.70; 10 lbs., \$2.90; 25 lbs., \$6.00; 100 lbs., \$14.50; 300-lb. bbl., \$40.50.**

PYROX WITHOUT POISON. A paste fungicide that is a comparison to Pyrox. This material contains no Calcium Arsenate and is not an insecticide. Packed in 100 and 300 lb. containers. Used principally on potatoes and celery. Use 12 lbs. to 100 Gallons of Water. Prices: **100 lbs., \$12.50; 300 lbs., \$36.00.**



NICOTINE PYROX is a special new spray which performs all the regular Pyrox functions and has an additional attraction in that it kills sucking insects—like aphids. It is the first truly complete spray—an indispensable item for successful gardening—for vegetables, small fruits and flowers. The price is 50c a jar, which makes four gallons of spray.



BOWKER'S CALCIUM ARSENATE is a powerful poison which kills potato bugs, bean beetles and other leaf-eating pests found among truck crops. It may be applied either wet or dry and is cheaper than Arsenate of Lead. 2 lbs. to 50 gallons of water or 1 lb. to 9 lbs. of Hydrated Lime. 4 lbs., 32c.; case (48 lbs.), 7½c. lb.



BOWKER'S ARSENATE OF LEAD is most effective as a poison for worms and insects which eat leaves of plants, fruit trees, etc. It is at its best in powder form in that it does not deteriorate from standing. Dust it on the leaves or mix 2 lbs. with 50 gallons of water. 1 lb., 20c.; 4 lbs., 60c.; case (48 lbs.), 14c. lb.

BOWKER'S SPECIAL POWDER NO. 1 is recommended especially to keep potatoes and tobacco free from bugs and rot. It may be used dry or mixed 6 lbs. to 50 gallons of water. **\$12.50 per 100 lbs.**

BOWKER'S BORDEAUX MIXTURE in powder form is prepared especially to prevent Blotch, Cherry leaf Spot, celery blight, tomato leaf spot, blight and leaf hoppers on potatoes. It is a product superior to the home-made Bordeaux mixture in suspension, adhesive and spreading qualities. 6 lbs. to 50 gals. water equals 3-3-50. 8 lbs. to 50 gals. water equals 4-4-50 mixture. 4 lbs., 65c.; case (48 lbs.), 14c. lb.

LIME SULPHUR. Concentrated Liquid Lime Sulphur is used 1 gal. to 9 gals. water for dormant spraying and 1¼ gals. to 50 gals. water for summer spraying. Dry Lime Sulphur (unusually fine powder) is used 15 lbs. to 50 gal. for dormant spraying and 6 lbs. to 50 gals. for summer spraying. Both are used to control scale, insects and fungous diseases of fruit. 5 lbs., \$1.20; 10 lbs., \$2.25.

P. L. Rohrer & Bro.

I used your seeds last year with good results.

Gallitzin, Pa., April 21, 1931
T. Bolan.

P. L. Rohrer & Bro.

I like your seeds so good I would never send to any other company.—Mrs. John Good.

Honeybrook, Pa. May 21, 1931

Georgetown, N. Y.

Dear Sirs: *I have received my shipment of seeds from you and they pleased me very much.*

Mrs. R. J. Daniels.

Pottstown, Pa., June 1, 1931.

Gentleman:—

Got seed corn O. K. and sure was very nice. Best seed I ever got from other companies.

Mrs. Albert Dahms.

HAMMOND'S SLUG SHOT. Hammond's slug shot is used from ocean to ocean. A light composite fine powder, easily distributed either by dusters, bellows or with water by spraying. Thoroughly reliable in killing cut worms, potato bugs, cabbage worms, chicken lice, sow bugs, Mexican bean beetle and army worm. **Lb., 20c; 5 lbs., 60c.**

BLACK LEAF "40." For lice on plants. These destructive insects get on all kinds of plants, cabbage, potatoes, beets, radishes, turnips, lettuce, cucumbers, peas, etc. Black Leaf "40" is the one most effective spray. It kills these lice as soon as it touches them and does not harm vegetables and flower plants when used as directed. Recommended by Experiment Stations throughout the United States. As a spray for soft bodied sucking insects. May be combined with other sprays. Does not clog the nozzle.

- 1 oz. bottle, 35c.,** makes 5 to 10 gallons.
- 5 oz. can, \$1.00,** makes 25 to 60 gallons.
- 2 lb. can, \$3.50,** makes 300 to 500 gallons.
- 5 lb. can, \$7.25,** makes 500 to 1000 gallons.
- 10 lb. can, \$11.85,** makes 1000 to 2500 gallons.

Cannot be sent by mail

RED ARROW INSECT SPRAY

A non-poisonous contact spray fatal to both chewing and sucking insects. Can be used on fruits, vegetables and flowers without any danger. Especially effective against Bean Beetles, Aphis, Rose chafers and other insects.

- Oz., 35c; ¼ pt., \$1.00; ½ pt., \$1.75; Quart, \$6.00; Gallon, \$20.00.**

Stop Poultry Losses

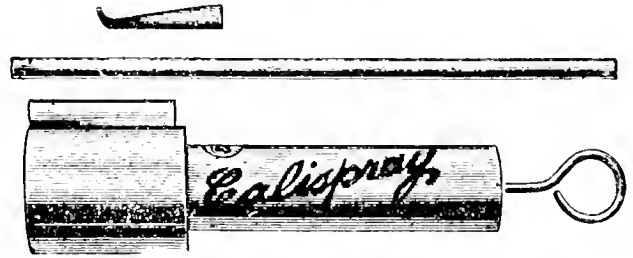
B. K. destroys disease germs by chemical action on contact. No acid or oil. It is safe to use. The thrifty poultryman will guard his profits by protecting the health of the baby chicks with B. K., the non-poisonous disinfectant and powerful germ killer.



PRICES

Quart	\$1.25
Gallon	3.00
5 Gallons	12.50

CALISPRAY DUSTERS



SILVER BEAUTY DUSTER

SILVER BEAUTY DUSTER

The ideal home garden duster. Made of the best materials and will stand lots of hard knocks. Self lubricating. Needs no attention. Holds one pound of Dust. Throws 8 to 10 feet. Equipped with tube and two types of spreaders to reach the under side of low growing plants and the tops of small trees. Price, **\$2.00, postpaid.**

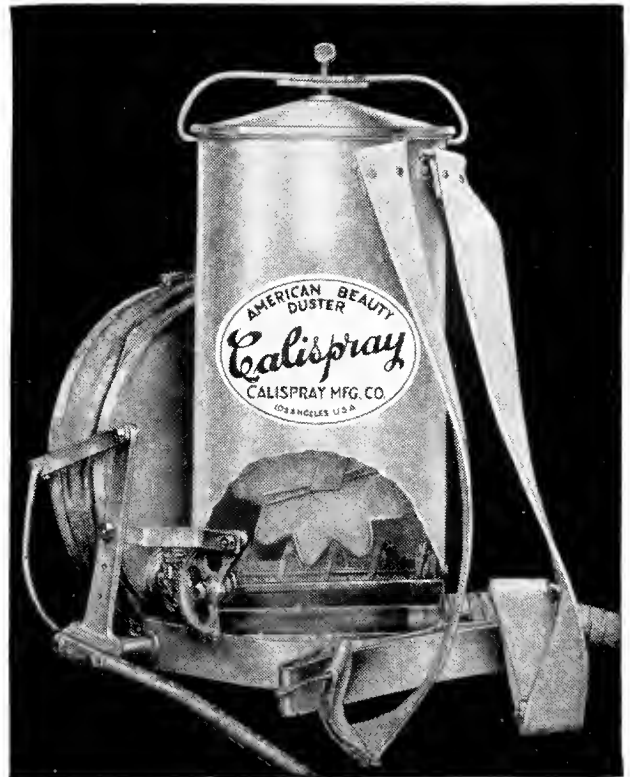
CALIFORNIA BEAUTY DUSTER

This duster is made to suit the needs of small truck farms. Moderate in price, but a high class machine. All inside working parts are coated with a rust-resisting finish, better than galvanizing, insuring long wear.

Bearings are of brass, and bellows are hinged. Will throw a cloud of dust ten feet. Capacity 12 pounds. Equipped with hose, tubing and spoon to reach under side of leaves on the ground without stooping.

Weights 13 lbs. ready to ship. Price **\$12.00** in first, second and third shipping zones.

AMERICAN BEAUTY DUSTER



AMERICAN BEAUTY DUSTER

The world's finest one-man duster. The only force feed duster built. Lumps are crushed and damp dusts forced through the screen. Feed is instantly adjusted. The only duster made that will not pack under pressure.

Bellows are not hinged, so that full benefit of entire stroke is accomplished at each movement. This is why we produce volume and smoothness in operation. Blows dust 15 feet.

Equipped with hose, two lengths of tubing for tall trees, and spoon for ground work. Capacity 15 lbs. Weights 18 lbs. ready to ship. Price, **\$18.00, postpaid** in first, second and third zones. *Write for booklet.*

INDEX

VEGETABLE SEEDS

	PAGE
Asparagus.....	12
Beans.....	12
Beets, Table.....	14
Beets, Stock.....	14
Cabbage.....	14
Carrots.....	15
Cauliflower.....	16
Celery.....	15
Corn, Pop.....	17
Corn, Sweet.....	17
Cucumber.....	16
Egg Plant.....	16
Endive.....	16
Kohl Rabi.....	21
Lettuce.....	18
Muskmelon.....	18
Onion Seed.....	19
Onion Sets.....	19
Parsley.....	21
Parsnip.....	21
Peas.....	20
Pepper.....	21
Pumpkins.....	21
Radish.....	22
Ruta Baga.....	23
Salsify.....	22
Spinach.....	23
Squash.....	21
Swiss Chard.....	23
Tomatoes.....	23
Turnips.....	23
Watermelon.....	19

FLOWER SEEDS

Antirrhinum ..	24
Ageratum.....	25
Aster.....	24
Cosmos.....	25
Delphinium.....	25
Dianthus.....	25
Larkspur.....	25
Marigold.....	26
Mignonette.....	25
Nasturtium.....	25
Pansy.....	26
Petunia.....	26
Phlox.....	26
Salvia.....	26
Scabiosa.....	27
Sweet Alyssum.....	27
Sweet Peas.....	27
Sweet William.....	27
Verbenia.....	27
Zinnia.....	27

FIELD SEEDS

	PAGE
Alfalfa.....	3
Alsike Clover.....	2
Barley.....	6
Buckwheat.....	9
Canada Field Peas.....	10
Clovers.....	1 & 2
Corn.....	8
Crimson Clover.....	2
Dwarf Essex Rape.....	9
Hay and Pasture Mixture.....	5
Kentucky Blue Grass.....	5
Lawn Grass.....	6
Millet.....	9
Oats.....	6
Orchard Grass.....	5
Permanent Pasture Mixture.....	5
Potatoes.....	7
Red Top.....	6
Soy Beans.....	10
Spring Wheat.....	9
Sudan Grass.....	9
Sweet Clover.....	4
Timothy.....	4
Timothy and Alsike Mixed.....	4
Tobacco.....	10
Vetch, Sandy or Hairy.....	9

MISCELLANEOUS

Arsenate of Lead.....	30
Black Leaf 40.....	31
Bordeaux Mixture.....	30
B-K-Disinfectant.....	31
Cahoon Seed Sower.....	5
Calcium Arsenate.....	30
Ceresan.....	29
Dry Lime and Sulphur.....	30
Dusters.....	31
Evergreen.....	28
Hotkaps.....	28
Kow Kare.....	3rd Cover
Oyama Plant Food.....	3rd Cover
Pestroy.....	31
Poultry Remedies (Conkey's).....	3rd Cover
Pyrox.....	30
Red Arrow.....	31
Semesan.....	29
Semesan Bel.....	29
Semesan Jr.....	29
Sheps Plant Spray.....	28
Slug Shot.....	31
Special Powder No. 1.....	30
Stanleys Crow Repellent.....	3rd Cover
Stimugerm.....	11
Stimulant.....	3rd Cover

PRICE LIST of P. L. ROHRER & BRO.—Farm Seeds

Smoketown, Lancaster County, Pennsylvania

QUOTATIONS SUBJECT TO CHANGE WITHOUT NOTICE

Prices are freight paid on all orders of 300 pounds or more, except Seed Potatoes and Onion Sets, to be shipped at one time to same destination to any R. R. station in Penna., N. Y., Ohio, N. J., Md., Va., Del., W. Va., R. I., Conn. and Mass.

ISSUED
Jan. 25, 1932

Half bushel at bushel rates. Less than half bushel lots at pound prices. **Bags are free and not weighed in.** These offers are made for your convenience. Don't overlook them.

CLOVERS	Weight Per Bu.	Lb.	Prices Per Lb.	Bu.	PASTURE MIXTURES	Weight Per Bu.	Lb.	Prices Per Lb.	Bu.
"Choice" Med.Red	99%	60	20	\$10.50	Highland	25	17	\$3.75	
"Domestic" Med.Red (U.S. Verified Origin Seed)	99½%	60	21	11.00	Lowland	25	17	3.75	
"Domestic" Mammoth	99½%	60	21	11.00	MILLETS				
"Fancy" Alsike	99%	60	20	10.50	German or Golden	48	06	2.50	
Special Hay Mixture		56	18	8.75	Japanese	35	07	2.00	
Fancy White Clover		60	45	24.00	SPRING GRAINS, ETC.				
White Sweet "Scarified"		60	09	4.50	Marquis Spring Wheat	60	04	2.00	
Fancy Crimson		60	13	6.50	Japanese Buckwheat	48	04	1.50	
ALSIKE & TIMOTHY MIXED					Bearded Barley	48	04	1.30	
Contains 20% Alsike		45	10	3.75	Dwarf Essex Rape	50	09	3.50	
ALFALFA					Winter Vetch	60	12	6.00	
"Certified" Northwest (U.S. Verified Origin Seed)		60	22	11.50	PEAS & BEANS				
Grimm-Idaho (State Sealed & Certified)		60	30	16.50	Wilson Early	60	05	1.60	
Grimm-Michigan		60	26	13.60	Manchu	60	04	1.60	
TIMOTHY					Mammoth Yellow	60	05	1.60	
"Fancy Northwest" 99⅝%		45	09	3.00	Canadian Field Peas	60	07	3.50	
GRASS SEEDS					SEED OATS 42 Pound Test				
Fancy Red Top		32	17	5.00	Swedish Select	32	05	.80	
Kentucky Blue		14	21	2.75	SEED CORN				
Orchard Grass		14	18	2.25	90-Day Yellow Dent	56	07	2.75	
Meadow Fescue		24	14	3.00	Bountiful Yellow Dent	56	07	2.75	
Sudan Grass		40	07	2.25	Lanc. Co. Sure Crop	56	07	2.50	
Fancy Lawn		20	30	4.75	Heavyweight Sure Crop	56	07	2.75	
STIMUGERM State for what crop					Red Cob Wh. Ensilage	56	07	2.75	
ALFALFA--CLOVERS--SWEET CLOVER					Cahoon Seed Sower Postpaid			4.50	
¼-bu. size				.35	STIMUGERM				
½-bu. size				.60	PEAS-BEANS-SOY BEANS-VETCH-COW-PEAS				
1-bu. size				1.00	Garden size			.25	
2½-bu. size				2.25	½-bu. size			.35	
PRICES ON MAINE GROWN SEED-POTATOES					1-bu. size			.60	
			Peck	½ Bu.	5-bu. size			2.25	
Certified Early Ohio			\$.45	\$.85	F. O. B. OUR STATION				
Certified Early Rose			.45	.85	Bu.	120 lb. Bag	10 Bags		
Certified Early Surprise			.45	.85	\$1.60	\$3.00	\$28.00		
Certified Irish Cobblers			.45	.85	1.60	3.00	28.00		
Certified Gold Coin			.45	.85	1.60	3.00	28.00		
Certified Green Mountains			.45	.85	1.60	3.00	28.00		
Certified Russetts			.40	.80	1.50	2.70	25.00		
Certified Smooth White Rurals			.40	.80	1.50	2.70	25.00		
PRICES ON ONION SETS					F.O.B. OUR STATION				
Yellow Globe Danvers					\$2.25 Per bu., 32 lbs.				
White Silver Skin					2.50 Per bu., 32 lbs.				

Prices on Seed Potatoes and Onion Sets are F.O.B. Smoketown, Freight or Express charges collect.

Add "EXTRA" for Postage if you want Field Seeds shipped by mail.

PRICE LIST OF P. L. ROHNER & CO.

Cigarettes, Cigar Cases, and Stationery

Item	Price
10 Cigarettes	10
20 Cigarettes	20
30 Cigarettes	30
40 Cigarettes	40
50 Cigarettes	50
60 Cigarettes	60
70 Cigarettes	70
80 Cigarettes	80
90 Cigarettes	90
100 Cigarettes	100
10 Cigar Cases	10
20 Cigar Cases	20
30 Cigar Cases	30
40 Cigar Cases	40
50 Cigar Cases	50
60 Cigar Cases	60
70 Cigar Cases	70
80 Cigar Cases	80
90 Cigar Cases	90
100 Cigar Cases	100
10 Stationery	10
20 Stationery	20
30 Stationery	30
40 Stationery	40
50 Stationery	50
60 Stationery	60
70 Stationery	70
80 Stationery	80
90 Stationery	90
100 Stationery	100

Prices are in pounds and pence.
 Union Set, to be made in
 same destination as the
 Penn. N.Y. Office, N.Y.C.
 W. Van R. L. ...



INCREASE YOUR MILK YIELD BY USING KOW-KARE

Kow-Kare works two ways to help you make more money from your cows. First by building up and maintaining a health standard to throw off disease and endless worry. Secondly by aiding the organs of digestion to convert dry rich winter feeds into milk—without waste—it brings back your feed money via the milk pail plus a real profit.

USE KOW-KARE WHEN COWS FRESHEN

Many serious ills have their origin at calving time when the average cow is lowest in vitality and resistance. At no time can Kow-Kare help you more definitely than at this critical period. Large can, \$1.00; small can, 55c. Postage extra.

USE BAG BALM FOR COWS' UDDERS

Bag Balm insures quick healing for chaps, cracked or injured teats, inflammation, etc. Pleasant to use. 10 oz. package, 60c. Postage extra.

OYAMA PLANT FOOD

OYAMA is fine for all kinds of plants, ferns, shrubs, roses, bulbs, lawns, berries, fruits and flowers. Gives seedlings a wonderful start and produces early vegetables.

OYAMA contains 17% nitrogen. It keeps the soil rich but odorless. Highly concentrated, easily applied and economical to use. *Never fails to produce wonderful results.* Full directions with every package. Price

House Plant Size, makes 6 gallons.....\$0.30
Garden Size, makes 32 gallons..... 1.10

STIM-U-PLANT

The Magic Fertilizer in Tablet Form.

STIM-U-PLANT is the only complete plant food in tablet form. Guaranteed analysis: 11 per cent Nitrogen, 12 per cent Phosphoric Acid, 15 per cent Potash. All of which elements are water soluble and immediately available to the feeding root hairs of the plant.

EASY TO USE

Simply insert tablets in soil about 3 inches from stem of plant, or dissolve in water at the rate of four tablets to the gallon and apply as liquid manure. Complete directions with every package.

Price—30 tablets, 25c.; 100 tablets, 75c.; 1000 tablets, \$3.50, postpaid.

Conkey's POULTRY REMEDIES

Conkey's Roup Remedy

Prices—30c., 60c., \$1.10 and \$2.10, postpaid.

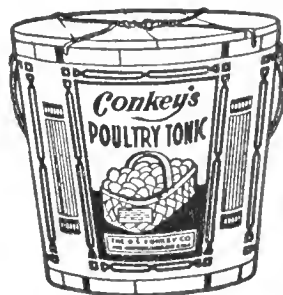
Conkey's Roup Pills

Prices—30c. and 60c., postpaid.

Conkey's White Diarrhea Tablets

Prices—30c., 60c., \$1.10 and \$4.00, postpaid.

CONKEY'S POULTRY TONIC



Help birds get more out of their feed. They produce more eggs and better flesh on less feed, by better digestion. Conkey's tonic is all Medicine—free from filler and "hot stuff" to overstimulate the birds and break down their health. Conkey's builds on a natural, healthy basis, inducing steady laying. Keeps young chicks growing and makes molting easy. Sold in

25c. and 50c. packages. 10 lb. pail, \$1.60; 25 lb. pail, \$3.00. Postage or express extra.

WALKO TABLETS FOR BABY CHICKS

Should be given in all drinking water from the time the chicks are out of the shell. Very valuable for diarrhea and bowel trouble. Prices, 50c. and \$1.00 packages.

STANLEY'S CROW REPELLENT

Will absolutely prevent crows and other corn pulling birds and animal pests such as moles, woodchucks, squirrels, etc., from pulling corn.



Protect Your Seed Corn

During the period when it is most easily damaged, by ridding your crop of crows and other corn-pulling birds and animals. It saves

loss of seed and labor of replanting. It positively will not clog any planter. It is non-poisonous and will not injure the seed or any kind of corn. It is more effective, more convenient to use, and more economical than any other material.

LARGE CAN, \$1.00
(Enough for 2 bu. of seed corn)

SMALL CAN, 60c.
(Enough for 1 bu. of seed corn)



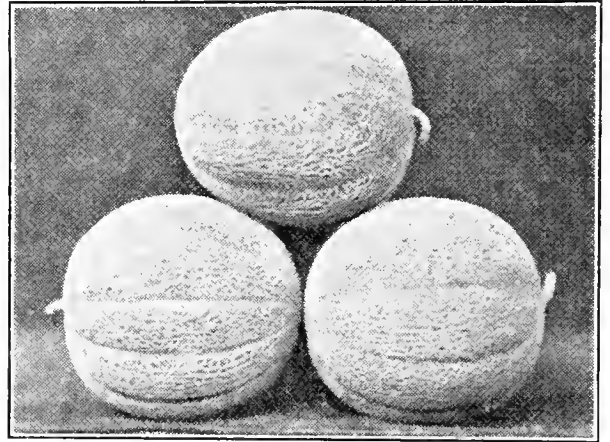
FOUR MONEY MAKERS

1 Packet of each—30c Postpaid

Bender's Surprise Muskmelon

Rohrer's Special Strain

We do not know of any Muskmelon or Cantaloupe that is equal to the Bender Melon. The Flesh is deep orange colored, very thick, deliciously sweet and fine flavor. Ripens medium early, if planted in the open ground, middle of May, the melons will ripen last of August. The size of the melons averages quite large, many weighing 10 pounds and over. Rohrer's special strain of Bender Melon has been bred for over ten years, special attention being paid to quality. The Rohrer strain is much superior to the ordinary strain of this melon. Pkt., 10c.; oz., 15c.; $\frac{1}{4}$ oz., 50c.; lb., \$1.50, postpaid.



Penn State Ballhead Cabbage

A very desirable late variety developed by Prof. C. E. Myers at the Penna. Agricultural Experiment Station. Test made on a measured acre, at the experimental station, produced 23.76 tons of Marketable heads. This is the heaviest yielding strain on Danish Ball Head. The heads are round, solid, uniform, heavy and of good quality. Splendid winter keeper. Our seed comes from Seed Stock, furnished by the originator. By mail, postpaid. Pkt., 10c.; oz., 60c.; $\frac{1}{4}$ lb., \$1.75; lb., \$6.00.

Eight Row Sweet Corn

A leader on the Lancaster Markets. Sells ahead of Stowells Evergreen. A profitable sort to grow. Ears 7 to 9 inches long, with eight rows of delicious sweet kernels. Many stalks produce two and three fully developed ears. Main crop variety. Eating quality of this corn cannot be excelled. Be sure to include some of this delicious corn on your order. By mail, postpaid Pkt., 10c.; $\frac{1}{2}$ lb., 20c.; lb., 30c.; 2 lbs., 55c.; 5 lbs., \$1.15; 10 lbs., \$2.00.



Rohrer's New Century Beet

If you want a beet that will stay tender and sweet all summer and winter, plant Rohrer's New Century. This beet without exception is absolutely the best table beet we have ever eaten. Large or small, they are tasty and tender. Beet is very deep red and leaves are green. It is the best winter keeping beet that we know of, and when cooked are sweet, tender and delicious. Pkt., 10c.; oz., 20c.; $\frac{1}{4}$ lb., 60c.; $\frac{1}{2}$ lb., \$1.10; lb., \$2.00; 5 lbs., \$1.60 per lb.

P. L. ROHRER & BRO.

SMOKETOWN, LANCASTER CO., PA.